

THE OFFICIAL GUIDE TO BOSTON

August 1-14, 2016

PANORAMA

EVENTS | SIGHTS | SHOPPING | MAPS | DINING | NIGHTLIFE | CULTURE

A yellow Super Duck boat is shown from a low angle, splashing through greenish water. The boat's interior is visible through the windshield, showing a driver in a light blue shirt and several passengers, including children. The boat is moving quickly, creating a large splash of white water in the foreground.

BOSTON BY WATER

Make a Splash on Boston Harbor with

SUPER DUCK TOURS

bostonguide.com



ROLEX

OYSTER PERPETUAL
AIR-KING



SIDNEY THOMAS

THE SHOPS AT PRUDENTIAL CENTER BOSTON 617.262.0935
THE SHOPS AT CHESTNUT HILL 617.965.5300
PROVIDENCE PLACE RHODE ISLAND

ROLEX  OYSTER PERPETUAL AND AIR-KING
ARE © TRADEMARKS.

contents

Features

8

PANO's Guide to Boston by Water

Set sail for summer fun on Boston Harbor and the Charles River



Departments

5 **A Peek at the Past**
Ye Olde Union Oyster House

6 **High 5**
Waterfront dining

10 **Boston's Official Guide**

- 10 Multilingual
- 15 Current Events
- 21 On Exhibit
- 24 Shopping
- 27 Cambridge
- 30 Maps
- 36 Neighborhoods
- 40 Real Estate
- 42 Sightseeing
- 48 Beyond Boston
- 50 Freedom Trail
- 52 Dining

62 **Boston Accent**
Sally Snowman,
keeper of Boston Light



ON THE COVER:

Super Duck Tours (refer to listing, page 46).

Photo: Derek Kouyoumjian.



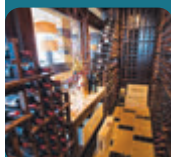
SPECTACULAR
VIEWS



EXQUISITE
CUISINE



UNSURPASSED
SERVICE



ACCLAIMED
WINE CELLARS



LIVE JAZZ
NIGHTLY



*At this
altitude,
Boston takes
on a beauty
you'll find
nowhere
else.*

Top of the Hub™

» 800 BOYLSTON STREET

PRUDENTIAL CENTER, BOSTON

617.536.1775

PANORAMA

THE OFFICIAL GUIDE TO BOSTON

bostonguide.com

August 1-14, 2016

Volume 66 • Number 6

Tim Montgomery • **Publisher**

Scott Roberto • **Art Director/Acting Editor**

Laura Jarvis • **Assistant Art Director**

Andrea Renaud • **Senior Account Executive**

Olivia J. Kiers • **Editorial Assistant**

Keren Osuji, Shannon Nicole Steffen
Editorial Interns

NV | newventuremediagroup

Tim Montgomery • **President & CEO**

Tyler J. Montgomery • **Vice President, Operations**

Rita A. Fucillo • **Vice President, Publishing**

Jacolyn Ann Firestone • **Vice President, Advertising**

Melissa J. O'Reilly • **Business Manager**

Lenard B. Zide, Butters Brazilian LLP •
Corporate Counsel

PANORAMA is published bi-weekly by New Venture Media Group LLC. Editorial and advertising offices at 560 Harrison Ave., Suite 412, Boston, MA 02118. Telephone (617) 423-3400. Printed in the U.S.A. All rights reserved. No part of this publication may be reprinted or otherwise reproduced without written permission of the publisher.

PANORAMA is a member of the Massachusetts Lodging Association, The Back Bay Association, The Greater Boston Convention and Visitors Bureau, Cambridge Chamber of Commerce, the Greater Boston Concierge Association, the Harvard Square Business Association, the Newbury Street League, the South End Business Alliance, the Downtown Crossing Association, the Kendall Square Association and the Central Square Business Association.

a **KEY** magazine affiliate

FOLLOW US!
[Facebook.com/PanoramaBoston](https://www.facebook.com/PanoramaBoston)
[Twitter.com/PanoramaBoston](https://twitter.com/PanoramaBoston)
[Instagram.com/PanoramaBoston](https://www.instagram.com/PanoramaBoston)
[PanoramaBoston.Tumblr.com](https://www.tumblr.com/PanoramaBoston)



UNION OYSTER HOUSE

As the country's oldest continuously operating restaurant, the Union Oyster House (or Ye Olde Union Oyster House, if you prefer; refer to listing, page 55) has served its fair share of fresh bivalves, among other delicacies, over the past 190 years. Since 1826, customers both ordinary and extraordinary have walked through its venerable doors, including such famous patrons as statesman and orator Daniel Webster and former U.S. President John F. Kennedy. The ancient timbers of the Union Oyster House practically exude history, one of the many reasons the eatery continues to attract avid fans to this day.

The building itself—located right on Boston's Freedom Trail that combines 16 sites essential to America's formative years—has its own notable past pre-dating the restaurant that now resides there. The edifice was designated a National Historic Landmark in 2003 not only because of the Union Oyster House, but also for its status as the oldest standing brick building in Boston, a fine example of the Georgian architectural style. The exact date of construction is unknown, yet prior to its advent as a prime seller of crustaceans, the locale—which strategically backed up to Boston Harbor in the colonial days—served as a dry goods shop beginning in 1742. In 1771, the upper floor served as the print shop of Isaiah Thomas, publisher of the revolution-minded *The Massachusetts Spy*. In 1775, the first paymaster for the Continental Army, Ebenezer Hancock, set up shop here, and the wives and neighbors of many of the Founding Fathers sewed and mended clothing for the colonists during the American Revolution. Post-revolution, in 1796, future king of France Louis Phillippe, who ruled from 1830-1848, resided here.

The early 19th century saw the rise of a major craze for oysters in the young country, so it wasn't long before Capen's Dry Goods Store was trans-



formed into the Atwood & Bacon Oyster House, later renamed for the historic street on which it is located. Slinging shellfish to a who's who of illustrious customers over the years—from the aforementioned Webster, who allegedly consumed several plates of oysters a day along with a tumbler of brandy and water, to presidents from Franklin Roosevelt to Bill Clinton, and celebrities of every era—isn't the Union Oyster House's only claim to fame. It is also the site of the first use of the toothpick in the United States and where the first waitress in America was employed beginning in the 1920s. Besides the classic menu of clam chowder, steamers, mussels, scrod and lobster, other notable features include a booth dedicated to JFK, as well as the semi-circular raw bar nicknamed in honor of the shuck-happy Webster. Despite a few nods to modern tastes on the menu, the Union Oyster House remains, remarkably, the same spot in which generations of Bostonians and visitors alike have indulged their appetites for both seafood and the past. —Scott Roberto



the Art drive™

August 6 and 7, 2016

Saturday and Sunday, 10 am to 5 pm

An OPEN STUDIO TOUR
through the COASTAL VILLAGES
of DARTMOUTH and WESTPORT

www.the-art-drive.com

WATERFRONT DINING

Sup seaside at these favorite eateries on historic Boston Harbor

THE BARKING CRAB (88 Sleeper St., 617-426-2722, barkingcrab.com): Its iconic red and yellow tent has been beckoning seafood lovers to this Fort Point Channel mainstay since 1994. Boasting an informal atmosphere, communal seating and such delectable seagoing fare as stuffed clams, Buffalo shrimp and fried clams, The Barking Crab offers rustic dining in the heart of the city.



LEGAL HARBORSIDE (refer to listing, page 60; pictured): This multi-level, Liberty Wharf-situated outpost of the Legal Sea Foods restaurant empire has something for every seafood lover, from oysters and clam chowder in the casual first floor dining room to lobster beignets and grilled swordfish in the formal second floor space to sushi and sandwiches on the upper deck, which boasts a retractable roof.

THE REEF (New England Aquarium Plaza, Central Wharf, 617-973-5200, neaq.org): A seasonal outdoor bar and restaurant located right in front of the beloved New England Aquarium (refer to listing, page 47), The Reef serves seafood, flatbreads, sandwiches and snacks along with cocktails and both beer and wine on tap.

NO NAME RESTAURANT (15½ Fish Pier West, 617-423-2705, nonamerestaurant.com): Since 1917, the Contos family has been serving fresh-off-the-boat, no-frills seafood like broiled scrod, fried scallops, crab cakes, lobster rolls and its famous seafood chowder to generations of Boston fishermen and visitors alike at this Fish Pier institution.

ROWES WHARF SEA GRILLE (refer to listing, page 55): A refined setting overlooking Boston Harbor and inventive dishes like pan-seared, cornmeal-crusted soft shell crab and yellowtail and yellowfin tuna crudo aren't the only amenities this Boston Harbor Hotel restaurant offers. Diners can also enjoy free outdoor entertainment—from live music Tuesday through Thursday nights and films on Friday evenings—thanks to the hotel's annual Summer in the City program. —*Scott Roberto*

2 West Street (corner of Washington), Downtown Boston
 617-670-0320 • BackDeckBoston.com
facebook.com/BackDeckBoston



Ernest Hemingway

BETWEEN TWO WARS

He transformed American literature in the 20th century.
His works and larger-than-life persona have inspired readers
around the world.

Manuscripts, letters, photos and personal items reveal the writer behind the legend at
this landmark exhibition showcasing the John F. Kennedy Presidential Library's
Ernest Hemingway Collection.

April 11 through December 31, 2016
Learn more by visiting www.JFKLibrary.org

JOHN F. KENNEDY
PRESIDENTIAL LIBRARY AND MUSEUM

PANORAMA's GUIDE TO BOSTON BY WATER

Set sail and enjoy these unique opportunities to experience both historic Boston Harbor and the scenic Charles River BY SCOTT ROBERTO



Super Duck Tours

The amphibious vehicles used by this tour operator spend 45 minutes on land visiting Boston's waterfront landmarks before splashing down into Boston Harbor for another 45 minutes of cruising the Hub's storied waterway. A Super Duck Tour gives passengers a unique view of the Old North Church, the *USS Constitution* and more. *Charlestown Navy Yard, 877-34-DUCKS, bostonsupertours.com*



Karma Crew Yacht Charters

Between the Tequila & Taco Tuesday excursions, Saturday mornings' Aussie-themed G'Day Mate Coffee Cruises and Oysters & Craft Brews on Sundays, Karma Crew's vintage 1948 motor yacht *Full Moon* is the hottest spot at sea. *Fan Pier, Rowes Wharf and Charlestown Navy Yard, 617-982-2767, karmacrewyachtcharters.com*



Boston Harbor Mini Speed Boats

Cruise through Boston Harbor—led by a knowledgeable guide—on one of these sleek vessels. After a quick training session, you'll be off on a tour of everything from the JFK Library to the Boston Tea Party Ships & Museum. *India Wharf Marina, 617-725-0900, bostonminispeedboats.com*



Revels Boston Harbor Cruise and Sings

This sunset cruise hosted by Revels—purveyors of folk music from all over the world—is a raucous sing-a-long full of traditional songs and sea chanteys. The next one takes place July 19 from 7–9 p.m. *60 Rowes Wharf, 617-972-8300, revels.org*



Boston Harbor Islands

Hop on a ferry from Long Wharf to Georges or Spectacle islands, two of the many hidden gems of this 20-year-old park system. From there, explore hiking trails, beaches and historic sites, or catch a connecting ferry to the other islands, including Little Brewster Island, the home of 300-year-old Boston Light, the country's oldest lighthouse. *66 Long Wharf, 617-227-4321, bostonharborislands.org*



Classic Harbor Line

Take a harbor cruise on the schooner *Adirondack III* (pictured) or the new-to-Boston, 1920s-style motor yacht *Northern Lights* for a stylish and breathtaking experience. *60 Rowes Wharf, 617-951-0020, boston-sailing.com*



Boston Pedal Boats

Get some exercise while taking in the picturesque Charles River by renting one of these self-powered, state-of-the-art Nauticraft cruisers that seat up to four riders. *Charles River Esplanade, 617-876-2800, bostonpedalboats.com*



Architecture Cruises

This tour highlighting iconic architectural treasures like the Prudential Tower (pictured) and the Custom House starts on the Charles River before continuing to the harbor. *CambridgeSide Galleria, Cambridge, 617-621-3001, charlesriverboat.com*



New England Aquarium Whale Watch

Watch some of the largest creatures on earth cavort in their natural habitat. This cruise to Stellwagen Bank Marine Sanctuary offers glimpses of humpback, minke, finback and, if you're lucky, rare North Atlantic right whales (pictured). *Central Wharf, 617-973-5206, neaq.org*



Charles River Canoe & Kayak

Rent a canoe, kayak, rowboat or stand-up paddleboard at four area locations, or take a guided kayak tour from the Cambridge outpost for an expert's take on the sights along Boston's waterways. *Boston: 1071 Soldiers Field Road, 617-965-5110; Cambridge: Kendall Square, 617-965-5110; other locations, paddleboston.com*



Faneuil Hall Marketplace

波士顿欢迎您!

马萨出塞州波士顿市是新英格兰地区最大的城市。波士顿市建立于1630年，是美国最古老的城市之一，也是美国独立战争期间诸多重大事件的发生地—如波士顿倾茶事件、保罗瑞维尔午夜骑行和邦克山战役。而丰富的历史只是1900多万游客每年来到这里的众多原因之一。今天的波士顿有着举世闻名的高等学府、出众的文化设施、顶尖的医疗机构和蓬勃发展的科技和生物技术产业。

游览波士顿最好的方式就是行走。这里有“街区之城”的美誉，每个街区都有着耐徒步者寻味的独特景致。后湾—波士顿最优雅的街区—是古老和现代的融合、也容纳了众多历史地标，如波士顿公共图书馆、卡普利广场、纽伯里时尚街、本市最高的两座建筑—克莱瑞顿街200号（原约翰汉考克大楼）和保诚大厦、以及位于联邦大道和马尔伯勒街间绿树掩映下的全美最美丽的住宅区之一。

接下来您应该踱步去附近的灯塔

山。这里有着古老的红砖墙、风景如画的街道、美丽的查尔斯街灯塔、和众多精致的商铺和餐厅。您也可以从这里开始著名的“自由之路”、直到波士顿的“小意大利”—北区。在夏天，您可以在北区诸多美味的餐厅里找到正宗的意大利美食，或是感受浓郁的节日气氛。在享用完美味佳肴—当然，还有像香炸奶酪卷之类的精美甜品—之后，您可以行走于美丽的罗斯肯尼迪绿道中，这里是北区和全美又一个旅游胜地—车水马龙的法尼尔厅市场—的分界线。

从法尼尔厅市场，您可以回到并穿过绿道前往波士顿港，沿怡人的海港步行通道向市区最新的滨海港口区进发。一路上您会发现新英格兰水族馆、波士顿倾茶事件博物馆、现代艺术博物馆、和更多超乎您想象的美食。

这些只是波士顿众多美丽街区的一瞥，您可以登录**bostonguide.com**来查看细节和发现更多“豆豆城”里独特而让人难忘的景致。



PATEK PHILIPPE
GENEVE

Begin your own tradition.



編號 5146J 年曆腕錶

LUX BOND & GREEN
JEWELRY WATCHES GIFTS • SINCE 1898

416 Boylston Street • BOSTON • 617-266-4747



Newbury Street

BIENVENUE À BOSTON!

Boston, Massachusetts est la ville la plus grande dans la Nouvelle-Angleterre. Fondée en 1630, Boston est l'une des plus anciennes villes des États-Unis et a été la scène de nombreux événements clés pendant la Révolution américaine, la Boston Tea Party, la Chevauchée de Paul Revere et la bataille de Bunker Hill. Pourtant, son histoire est juste une des nombreuses raisons pour lesquelles plus de 19 millions de visiteurs voyagent ici chaque année. Aujourd'hui Boston est connue pour ses collèges et universités de renommée mondiale, des équipements culturels exceptionnels, des institutions médicales supérieures des industries de haute technologie et de la biotechnologie en plein croissance.

La meilleure façon d'explorer Boston est tout simplement de marcher. La ville est souvent dénommée comme une « ville de quartiers », et chacun d'eux a sa propre personnalité distincte mieux découverte à pied. Back Bay, le quartier le plus élégant de Boston, est un charmant mélange d'ancien et de nouveau, le foyer de monuments historiques importants tels que la Bibliothèque Boston Public, Copley Square, la rue branchée Newbury Street, les deux plus hauts bâtiments-200 Clarendon (anciennement la tour John Hancock) et le Prudential Building - et deux des plus belles artères résidentielles de l'Amérique, Commonwealth Avenue et Marlborough Street.

Le proche Beacon Hill devrait être le prochain sur votre chemin à pied, où les historiques maisons en briques rouges en rangée bordent les rues pittoresques et le charmant Charles Street attire avec ses nombreux magasins et restaurants. Vous pouvez aussi explorer les débuts du fameux Freedom Trail, qui se continue dans l'historique North End, « La petite Italie » propre à Boston. Découvrez une cuisine italienne authentique dans de nombreux excellents restaurants de North End et profiter des festivals animés tout au long des mois d'été. Après votre déjeuner ou dîner -et cannoli !-, marcher à travers la belle Rose Kennedy Greenway, qui sépare North End des boutiques, restaurants et lieux de divertissement myriade du marché de Faneuil Hall, l'une des destinations les plus populaires aux États-Unis.

De Faneuil Hall, vous pouvez retourner à Boston Harbor à travers la Greenway et suivre l'aimable Harbor Walk vers le plus récent quartier de Boston, le district de Seaport. Sur le chemin, vous découvrirez le New England Aquarium, les navires et la musée du Boston Tea Party, l'Institut d'Art Contemporain et des restaurants plus nombreux que ce que vous pouvez imaginer.

Ce ne sont que quelques-uns des quartiers étonnants de Boston. Visitez bostonguide.com pour plus de détails sur ces monuments et tous les autres endroits inoubliables uniques à "Beantown."



The Swan Boats at
Boston Public Garden

¡BIENVENIDO A BOSTON!

Boston, Massachusetts es la ciudad más grande de Nueva Inglaterra. Fundada en 1630, Boston es una de las ciudades más antiguas de los Estados Unidos y fue el escenario de muchos eventos claves durante la Revolución estadounidense el Motín del té, la cabalgada de medianoche de Paul Revere y la batalla de Bunker Hill. Sin embargo, su historia es sólo una de las muchas razones por las cuales más de 19 millones de visitantes vienen aquí cada año. Hoy Boston es conocida por sus universidades de fama mundial, los excelentes servicios culturales, las mejores instituciones médicas y las crecientes industrias de alta tecnología y de biotecnología.

La mejor manera de explorar Boston es caminando. La ciudad es a menudo llamada una “ciudad de barrios”, y cada uno de ellos tiene su propia personalidad que se descubre mejor a pie. Back Bay, el barrio más elegante de Boston, es una encantadora mezcla de lo viejo y lo nuevo, es sede a monumentos históricos importantes, como la Biblioteca Pública de Boston, la Plaza Copley, la refinada calle Newbury Street, los dos edificios más altos de la ciudad 200 Clarendon (anti-guamente la Torre de John Hancock) y el Prudential Building y una de las más bellas calles residenciales en los Estados Unidos a lo largo de la arbolada avenida Commonwealth y Marlborough Street.

La cercana vecindad de Beacon Hill, donde hileras de casas históricas de ladrillo rojo delinean calles pintorescas y Charles Street nos invita con sus numerosas tiendas y restaurantes finos, debe ser lo próximo en su paseo. También puede explorar los inicios del famoso Freedom Trail, que continúa en el histórico North End, la “Pequeña Italia” de Boston. Descubra la auténtica cocina italiana en muchos restaurantes excelentes de North End y disfrute de los animados festivales durante de los meses de verano. Después de su almuerzo o cenay cannolo, camine a través de la hermosa Rose Kennedy Greenway, que separa el North End de la miriada de comercios, restaurantes y entretenimientos del efervescente Mercado Faneuil Hall, uno de los sitios más visitados en los Estados Unidos.

De Faneuil Hall se puede regresar al otro lado de Greenway a la bahía de Boston y seguir el Harborwalk hacia el barrio más nuevo de Boston, el Distrito Seaport. Por el camino, descubrirá el Acuario de Nueva Inglaterra, varios hoteles alucinantes, el Museo del Motín del té, el Instituto de Arte Contemporáneo y más restaurantes que lo que se puede imaginar.

Estos son sólo algunos de los llamativos barrios de Boston. Visite bostonguide.com para ver más detalles sobre estos y todos los otros lugares inolvidables y únicos de “Beantown.”



Rose Kennedy Greenway

ボストンへようこそ!

マサチューセッツ州にあるボストンはニューイングランド地方で最大の都市です。1630年に設立されたボストンはアメリカ合衆国で最も歴史のある都市のひとつであり、「ボストン茶会事件」、「ポール・リビアの「真夜中の騎行」」、「バンカーヒルの戦い」など、アメリカ独立戦争の鍵となる様々な事件の舞台ともなりました。ですが、ボストンが歴史ある街であることは毎年19万人以上の旅行者が訪れる理由のたった1つにしか過ぎません。今日、ボストンは世界で名高い大学、傑出した文化施設、トップレベルの医療機関そしていまなお成長を止まないハイテクロジ産業とバイオテクノロジー産業があることで知られています。

ボストンを探検する一番いい方法は街歩きです。ボストンは「ネイバーフッド」と呼ばれる地区のようなものが沢山あり、「シティー・オブ・ネイバーフッズ」としばしば言われています。それぞれの地区にははっきりとした個性があってそれらは街歩きによって最も体感することができます。ボストンにおいて最も格調の高い地区であるバックベイは古き良きものと新しいものがうまく混在されている素敵な場所です。ボストン公立図書館、コプリー・スクエア、流行の最先端であるニューベリー・ストリート、(以前ジョンハンコックタワーと呼ばれていた)200クラレンドンとブルデンシャル・センターという街で最も高い2つのビル、そして木々が連なるコモンウェルスアベニューとマールバラストリートという、アメリカで最も美しい居住地区である大きな道路があります。

ベーコンヒルの近くが次にあなたが足で訪れ

べき目的地となります。そこはまるで絵本の世界にあるような道に歴史ある赤レンガの家々が連なり、沢山の面白いお店やレストランが旅行者を誘う可愛らしいチャールズ通りがある場所です。ボストン固有のリトルイタリアーがある歴史あるノース・エンドまで続く有名なフリーダムトレイルの最初の部分も散策することもできます。正真正銘のイタリア料理をノース・エンドにある素晴らしいレストランで堪能してみてください、そして夏の間に開かれる活気あるフェスティバルを是非楽しんでください。ランチやディナーの後は美しいローズ・ケネディ・グリーンウェイを横断してみてください。この道はショッピングや食事、エンターテイメントが心行くまで楽しめるファニルホール市場という、アメリカで最も観光客が訪れるにぎやかな場所の1つであり、その場所とノース・エンドを分けている道です。

ファニルホールからはグリーンウェイを越えてボストンハーバーに歩いて帰ることができます。その道を進んでいくとボストンで一番新しい地区、シーボートエリアに向かうことができます。その道沿いでは、ニューイングランド水族館、いくつかの特筆すべきホテル、ボストン茶会事件船と博物館、ボストン・コンテンポラリーアート美術館(ICAボストン)そして想像以上の数のレストランを見つけることができます。

これらはボストンの素晴らしい場所のほんの少しにしかすぎません。bostonguide.comを検索して上記の場所についてのさらなる詳細やボストンのその他全てのユニークで忘れられないスポットについては是非調べてみてください。

PANO PICK



BOSTON SEAFOOD FESTIVAL

The Boston Fisheries Foundation hosts its fifth annual Seafood Festival at historic Fish Pier. Enjoy a variety of vendors who serve New England favorites like chowder, lobster rolls and fried clams, as well as an oyster shucking contest, a costume contest, a beer garden, live chef demonstrations and entertainment for the kids.

Boston Fish Pier, 212 Northern Ave., 617-986-3573, bostonseafoodfestival.org. Aug 7. \$15.

Bowling/Billiards/Games

KINGS

50 Dalton St., 617-266-2695; 600 Legacy Pl., Dedham, 781-329-6000; 510 Market St., Lynnfield, 781-334-4400; 52 Second Ave., Burlington, 781-238-4400; kingsbowlamerica.com. Kings isn't your parents' bowling alley. Come for bowling, billiards, Skee-Ball and more, then stay for the versatile menu of classic American cuisine.

Classical Music

BOSTON LANDMARKS ORCHESTRA

DCR Hatch Shell, Charles River Esplanade, 617-987-2000, landmarksorchestra.org. Free and open to the public; concerts begin at 7 p.m. unless otherwise noted. This classical ensemble helmed by Music Director Christopher Wilkins presents its annual summer season of outdoor concerts. **July 20**—Pictures at an Exhibition; **July 27**—Verdi & Valkyries; **Aug 3** at dusk—Special

INSIDE TIP: The Boston Landmarks Orchestra was founded in 2001 by Charles Ansbacher.

film screening: *On the Town*; **Aug 10**—Landmarks Lollapalooza.

Comedy

IMPROV ASYLUM

216 Hanover St., 617-263-6887, improvasylum.com. \$5-27, dinner packages available. Some of Boston's top improvisational comics perform uproarious and creative shows at this theater in Boston's North End.

LAUGH BOSTON

Westin Seaport Waterfront Hotel, 425 Summer St., 617-725-2844, laughboston.com. Boston's newest comedy club features premier stand-up comedy from local and national headliners.

NICK'S COMEDY STOP

100 Warrenton St., 617-438-1068, nickscomedystop.com. \$20. Nick's is the city's longest-running comedy club.

WILBUR THEATRE

246 Tremont St., 617-248-9700, thewilbur.com. This venue hosts comedic headliners as well as national musical

CURRENT EVENTS

talent. **Aug 10 & 11** at 7:30—Hannibal Buress, \$39; **Aug 12** at 7:30 p.m.—R-rated hypnotist Frank Santos Jr., \$25.

Film

BRIGHT FAMILY SCREENING ROOM

Paramount Center, 559 Washington St., 617-824-8400. \$10. Visit artsemerson.org for full schedule. Emerson College's state-of-the-art screening room features a variety of classic films.

MUGAR OMNI THEATER

Museum of Science, 617-723-2500 or 617-333-FILM, mos.org. \$10; seniors \$9; children (3-11) \$8. Discounted admission after 6 p.m. This IMAX theater presents larger-than-life images on a five-story high domed screen. **Now showing:** *Adrenaline Rush: The Science of Risk*; *Wild Africa*; *National Parks Adventure*; *Dolphins*.

SIMONS IMAX THEATRE

Visit the first large-format theater in Boston to have 3D viewing capability. **Now showing:** *Humpback Whales 3-D*; *Galapagos 3-D* (pictured). New England Aquarium, Central Wharf, 866-815-4629, neaq.org. \$9.95; seniors & children (3-11) \$7.95.



Live Music

AGGANIS ARENA

Boston University, 925 Commonwealth Ave., 800-745-3000, agganisarena.com. This venue on the BU campus is a state-of-the-art entertainment center. **Aug 12** at 8 p.m.—Halsey, \$37.

BLUE HILLS BANK PAVILION

290 Northern Ave., 617-728-1600, livenation.com. See the world's biggest acts on a spectacular harborside stage. **July 19** at 7:30 p.m.—Jane's Addiction, \$29.50-59.50; **July 20** at 7:30 p.m.—311, \$29.50-59.50; **July 21** at 7:30 p.m.—M83, \$35 & 49.50; **July 22** at 7:30 p.m.—Lynyrd Skynyrd, \$36-76; **July 23** at 8 p.m.—Flight of the Conchords, \$25-55; **July 26** at 7:30 p.m.—Yanni, \$40-125; **July 28** at 7 p.m.—

Fifth Harmony, \$19.50-59.50; **July 30** at 7:30 p.m.—Josh Groban, \$57.50-165.50; **July 31** at 7:30 p.m.—Bryan Ferry, \$29.50-75; **Aug 2** at 6:45 p.m.—Counting Crows and Rob Thomas, \$36-90.50; **Aug 3** at 6 p.m.—Bush and Chevelle, \$29.50-59.50; **Aug 6** at 7:30 p.m.—The Australian Pink Floyd Show, \$25-55; **Aug 9** at 7 p.m.—Deftones, \$33.75-63.75; **Aug 11** at 7 p.m.—O.A.R., \$29.50-59.50; **Aug 12** at 6:30 p.m.—Umprey's McGee, \$29.50 & 35; **Aug 13** at 6:30 p.m.—Gov't Mule, \$25-55.

HOUSE OF BLUES

15 Lansdowne St., 888-693-BLUE, hob.com/boston. This club, concert hall and restaurant across from Fenway Park welcomes top rock, blues and pop acts. **July 21** at 7 p.m.—Silversun Pickups, \$35 & 45; **July 24** at 7 p.m.—Sugar Ray, Everclear, Sponge and Lit, \$36 & 46; **July 28** at 7 p.m.—Garbage, \$45 & 55; **July 30** at 6 p.m.—Chino y Nacho and Guaco, \$55-85; **July 31** at 7 p.m.—The Last Shadow Puppets, \$32.50 & 45; **Aug 5** at 6:30 p.m.—Boys Like Girls, \$25 & 35; **Aug 8** at 7 p.m.—The Go-Go's, \$35 & 45; **Aug 14** at 7 p.m.—98°, O-Town, Dream and Ryan Cabrera, \$50 & 65.

PARADISE ROCK CLUB

967 Commonwealth Ave., 617-562-8800, thedise.com. An intimate setting with big sound, the Paradise is one of Boston's favorite rock clubs. **July 21** at 7 p.m.—Anderson .Paak & The Free Nationals, \$20; **July 23** at 7 p.m.—Cousin Stizz, \$15; **July 31** at 7 p.m.—Rhye, \$25; **Aug 9** at 7 p.m.—Boris, \$20; **Aug 11** at 7 p.m.—L7, \$24.50.

ROYALE

279 Tremont St., 800-745-3000, royaleboston.com. This Theatre District club boasts red-hot dance nights and live shows by top indie rock acts. **July 31** at 7 p.m.—Zakk Wylde, \$28; **Aug 2** at 7:30 p.m.—The Struts, \$19.50; **Aug 3** at 7 p.m.—Broods, \$25.50; **Aug 6** at 6 p.m.—The Fall of Troy, \$20; **Aug 9** at 7 p.m.—Belly, \$32.

SCULLERS JAZZ CLUB

DoubleTree Guest Suites Hotel, 400 Soldiers Field Road, 617-562-4111, scullersjazz.com. This Boston club is known for featuring the biggest names in Latin and contemporary jazz, blues, soul, R&B, cabaret and world music. **July 29** at 8 and 10 p.m.—Django Festival All-Stars, \$40; **Aug 5** at 8 and 10



Your Aquarium Adventure Awaits!



New England
Aquarium

Protecting the blue planet

Photos of octopus, touch tank, and seal: S. Cheng



New England Aquarium Whale Watch



Presented by



Simons IMAX® Theatre

NATURE'S WONDERLAND
GALAPAGOS
3D



CURRENT EVENTS

p.m.—Big Bad Voodoo Daddy, \$45; **Aug 12** at 8 and 10 *p.m.*—Diane Schuur, \$35; **Aug 13** at 8 and 10 *p.m.*—Rachelle Ferrell, \$48.

TD GARDEN

TD Garden, 100 Legends Way, 617-624-2327, tdgarden.com. Home to the Boston Celtics and Bruins, this arena also hosts some of the biggest acts in music. **July 20** at 7 *p.m.*—Demi Lovato and Nick Jonas, \$29.95–99.95; **Aug 10** at 6:30 *p.m.*—Drake and Future, \$49.50–149.50; **Aug 12** at 7 *p.m.*—Pitbull, \$39.95–139.95.

TOP OF THE HUB

Prudential Tower, 52nd floor, 617-536-1775, topofthehub.net. Sun & Mon from 8 *p.m.*–midnight, Tue–Thu from 8:30 *p.m.*–12:30 *a.m.*, Fri & Sat from 9 *p.m.*–1 *a.m.* Enjoy food, drinks and the best view in Boston as you swing to live jazz and classics from the Great American Songbook.

WILBUR THEATRE

246 Tremont St., 617-248-9700, thewilbur.com. This venue hosts comedic headliners as well as national musical talent. **July 29** at 8 *p.m.*—Pink Floyd Laser Spectacular,

\$25 & 35; **Aug 3** at 8 *p.m.*—Todrick Hall presents *Straight Outta Oz*, \$25 & 35; **Aug 4** at 8 *p.m.*—Get the Led Out, \$25 & 35; **Aug 6** at 8 *p.m.*—George Thorogood, \$45 & 65; **Aug 7** at 7:30 *p.m.*—Hot Tuna with Leftover Salmon, \$35 & 45.

Special Events

DINE OUT BOSTON

Visit bostonusa.com/visit/dineoutboston for a full list of participating restaurants. **Aug 14–19 & 21–26.** Lunch \$15–25, Dinner \$28–38. Now's your time to take a chance on that eatery you've been eyeing. With about 200 of the best restaurants around Boston offering specially designed, mouth-watering menus at affordable price points, indulgence is duly encouraged.

FIGMENT BOSTON

Rose Kennedy Greenway, figmentproject.org. **July 30 & 31.** Free. An explosion of creative energy, this annual celebration of participatory art and culture transforms the Rose Kennedy Greenway into a large-scale collaborative artwork for the entire weekend.

Dine...Shop...Have Fun!

40th Anniversary Celebration



- Outside Dining & Bars
 - Street Theater
 - Historic Landmarks
 - Restaurants & Food Colonnade Merchants
 - Retail Shops & Pushcarts
- www.FaneuilHallMarketplace.com



NORTH END FEASTS AND PROCESSIONS

Boston's "Little Italy" honors patron saints and the neighborhood's culture with weekend festivals featuring Italian delicacies, streetside bands playing Old World melodies and vendors offering authentic wares on the cobblestoned streets dressed with garlands.

Aug 4-7—St. Agrippina di Mineo Feast; **Aug 12-14**—Madonna Della Cava Feast.

Sports

BOSTON CANNONS/MLL

Harvard Stadium, 95 N. Harvard St., Allston, 617-746-9933, bostoncannons.com.

July 30 at 6:30 p.m. vs. New York Lizards

Aug 6 at 5 p.m. vs. Florida Launch

BOSTON RED SOX/MLB

Fenway Park, 4 Yawkey Way, 617-482-4SOX, redsox.com.

July 19 & 20 at 7:10 p.m. vs. San Francisco Giants

July 21-23 at 7:10 p.m. vs. Minnesota Twins

July 24 at 1:35 p.m. vs. Minnesota Twins

July 25 & 26 at 7:10 p.m. vs. Detroit Tigers

July 27 at 1:35 p.m. vs. Detroit Tigers

Aug 9-11 at 7:10 p.m. vs. New York Yankees

Aug 12 & 13 at 7:10 p.m. vs. Arizona Diamondbacks

Aug 14 at 1:35 p.m. vs. Arizona Diamondbacks

NEW ENGLAND REVOLUTION/MLS

Gillette Stadium, 1 Patriot Place, Foxborough, 877-GET-REVS, revolutionsoccer.net.

July 23 at 7:30 p.m. vs. Chicago Fire

Aug 13 at 7:30 p.m. vs. Philadelphia Union

Theater

BLUE MAN GROUP

Charles Playhouse, 74 Warrenton St., 800-BLUE-MAN, blueman.com. **Ongoing**. \$45-100.

This giddily subversive off-Broadway hit serves up outrageous and inventive theater where three muted, blue-painted performers spoof both contemporary art and modern technology. Wry commentary and bemusing antics are matched only by the ingenious ways in which music and sound are created.

CUISINE & CONFESSIONS

The 7 Fingers, Emerson/Cutler Majestic Theatre, 219 Tremont St., 617-824-8400.

Through Aug 7. \$25-125. An unusual mélange of circus, avant-garde dance, personal narrative, theater and cooking show comedy, this theatrical feast explores



EAT • DRINK • PLAY • SCORE

COME TO EAT,
STAY TO PLAY



Across from Sheraton
and Hilton Hotel

50 DALTON STREET,
BOSTON, MA
617.266.2695



KingsBowlAmerica.com

“Very Funny!”
-NYTimes

“Laugh Yourself Silly!”
-The Boston Globe

SHEAR MADNESS

BOSTON'S HILARIOUS WHODUNIT!

Call 617-426-5225
www.shearmadness.com

Charles Playhouse • 74 Warrenton Street

COME FOR THE **CIRCUS**,
STAY FOR THE BANANA BREAD!

4 WEEKS ONLY!
JUL 12 - AUG 7

CUISINE & confessions

LES 7 DOIGTS DE LA MAIN

ARTS EMERSON AND JONATHAN REINIS PRODUCTIONS PRESENTS

ARTSEMERSON.ORG / 617.824.8400

stories from our family kitchens—foods prepared, memories made—rituals that underpin our most important relationships.

LOVE'S LABOUR'S LOST

Commonwealth Shakespeare Company, Shakespeare on the Common, 617-426-0863. July 20–Aug 7. Free. CSC's 21st season of Free Shakespeare on the Common presents the Bard's coming-of-age tale about four young men and four young women whose friendship and loyalty are put to the test when romantic, youthful notions of love encounter the challenges of adulthood.

MARY POPPINS

North Shore Music Theatre, 62 Dunham Road, Beverly, 978-232-7200. July 12–31. \$27–74. Disney's award-winning musical about everyone's favorite magical nanny features unforgettable songs and breathtaking production numbers to dazzle and delight the entire family.

SHEAR MADNESS

Charles Playhouse Stage II, 74 Warrenton St., 617-426-5225, shearmadness.com. Ongoing. \$50. It's just another day at the Shear Madness salon, when suddenly the lady upstairs gets knocked off. Whodunit? Join the fun as the audience matches wits with the suspects to catch the killer at this wildly popular comedy. *Shear Madness* has audiences laughing around the world. Boston is the original.

Tickets

ACE TICKET

534 Commonwealth Ave.; 109 Causeway St.; 139 Cypress St., Brookline; 961 Broadway St., Saugus; 800-MY-SEATS, aceticket.com. With ticket offices in Kenmore Square, North Station, Brookline and Saugus, as well as its secure website, Ace Ticket specializes in hard-to-find tickets for all types of events, from sports to concerts and more, providing the ideal solution to all your ticket needs.

BOSTIX

Faneuil Hall Marketplace and Copley Square. Tue–Sat 10 a.m.–6 p.m.; Sun 11 a.m.–4 p.m. Information and tickets, including half-price seats on day of event, for the best performing arts around Boston. Log on to bostix.org to purchase discounted tickets and receive special e-mail updates. All ticket offers subject to availability.

PANO PICK



JOHN F. KENNEDY PRESIDENTIAL LIBRARY AND MUSEUM

This museum portrays the life, leadership and legacy of John F. Kennedy and members of his illustrious family in 21 exhibits, three theaters, 20 video presentations and more. Special exhibits: Young Jack; **Ernest Hemingway: Between Two Wars.**

Columbia Point off Morrissey Boulevard, next to UMass Boston, Dorchester, 866-535-1960, jfklibrary.org. Daily 9 a.m.-5 p.m. \$14; seniors & students \$12; children (13-17) \$10; children (12 and under) free; library forums free.

Boston

BOSTON CHILDREN'S MUSEUM

Museum Wharf, 308 Congress St., 617-426-6500, bostonkids.org. Sat-Thu 10 a.m.-5 p.m., Fri 'til 9 p.m. \$16; children (under 1) free; Sat-Thu 4-5 p.m. \$8; Fri 5-9 p.m. (Family Night) \$1. This museum features interactive exhibits that allow children to learn about science, history and culture firsthand.

INSTITUTE OF CONTEMPORARY ART

25 Harbor Shore Drive, 617-478-3100, icaboston.org. Sat, Sun, Tue & Wed 10 a.m.-5 p.m., Thu & Fri 'til 9 p.m. \$15; seniors \$13; students \$10; children (under 17) free. Free to all Thu 5-9 p.m. This state-of-the-art structure on the South Boston waterfront presents installations of contemporary paintings, sculptures and photographs, as well as live dance and music. **Special exhibits:** Ugo Rondinone: Moonrise Sculptures; Liz Deschenes; Nalini Malani: In Search of Vanished Blood.

ISABELLA STEWART GARDNER MUSEUM

25 Evans Way, 617-566-1401, gardnermuseum.org. Wed-Mon 11 a.m.-

5 p.m., Thu 'til 9 p.m. \$15; seniors \$12; college students \$5; children (under 18) free. Visitors named Isabella are also admitted free. Commissioned by Boston aristocrat Isabella Stewart Gardner and modeled after a 15th-century Venetian palace, the museum exhibits 2,500 objects, including works by Rembrandt, Botticelli, Raphael, Titian and Matisse. **Special exhibit:** Off the Wall: Gardner and Her Masterpieces.

THE MUSEUM OF AFRICAN AMERICAN HISTORY

African Meeting House, 46 Joy St. (corner of Smith Court), Beacon Hill, 617-725-2991, afroammuseum.org. Mon-Sat 10 a.m.-4 p.m. \$5; seniors & children (13-17) \$3; children (12 & under) free. Explore the history of Boston's 19th-century African-American community at the African Meeting House, the oldest African-American church still standing in the United States. In addition, there are tour maps available for the Black Heritage Trail.

MUSEUM OF FINE ARTS

465 Huntington Ave., 617-267-9300, mfa.org. Sat-Tue 10 a.m.-5 p.m., Wed-Fri 'til 10 p.m. Admission (includes two visits in a 10-day

period): \$25; seniors & students \$23; Wed after 4 p.m., pay as you wish; children (7-17) \$10 on weekdays before 3 p.m., free at all other times; children (6 and under) free. The museum houses an outstanding collection of paintings, prints, sculptures, furnishings and other artwork from ancient times through the present, as well as the most comprehensive collection of Asiatic art in the world and a four-floor Art of the Americas wing. **Special exhibits:** Gold and the Gods: Jewels of Ancient Nubia; Kenneth Paul Block: Illustrations; Hiro: Photographs; Landscape, abstracted; London and Edo: Cities on the Rise; Ruined: When Cities Fall; Year of the Monkey; HOMiE: In Our Eyes; **through July 31**—Sean Townley: 7 Diadems/Red Ankhhafts; **beginning Aug 9**—Della Robbia: Sculpting with Color in Renaissance Florence.

MUSEUM OF SCIENCE

Science Park, 617-723-2500, mos.org. Sat–Thu 9 a.m.–5 p.m., Fri ‘til 9 p.m. \$23; seniors \$21; children (3–11) \$20; children (under 3) free. Planetarium and Omni theater tickets: \$10; seniors \$9; children (3–11) \$8. Combination ticket prices and evening discounts available. This popular museum for all ages boasts interactive science exhibits, as well as laser and astronomy shows in the Charles Hayden Planetarium. **Special exhibits:** Treasured Lands: The U.S. National Parks in Focus; What I Eat: Around the World in 25 Diets; Frogs: A Chorus of Colors; Spiders Alive!

THE SPORTS MUSEUM

5th and 6th floor premium seating levels, TD Garden, Causeway Street, 617-624-1234, sportsmuseum.org. Mon–Sat 10 a.m.–4 p.m., Sun 11 a.m.–4 p.m. Hours altered during TD Garden events, call ahead. \$12; seniors & children (10–18) \$6; children (under 10) & military free. The Sports Museum showcases New England’s rich sports heritage through an unparalleled collection of artifacts, multimedia and artwork. Exhibits include Boston Redskins, The Evolution of Women’s Basketball, The Ball that Changed History and The Original Bruin.

USS CONSTITUTION MUSEUM

Charlestown Navy Yard, Charlestown, 617-426-1812, ussconstitutionmuseum.org. Daily 9 a.m.–6 p.m. Free. The museum preserves the treasures of “Old Ironsides,” the U.S. Navy’s flagship and the world’s oldest commissioned warship. View weapons, doc-

uments, journals and more, learn to load and fire a cannon, try out a sailor’s sleeping quarters, virtually command the *Constitution* in battle and learn about the ship’s ongoing restoration.

Galleries

ADELSON GALLERIES

520 Harrison Ave., 617-832-0633, adelsongalleriesboston.com. Wed–Sun noon–6 p.m. For over 40 years, this gallery has distinguished itself for its expertise in the fields of American Impressionism, Realism and Modernism. **Special exhibit:** Clint Baclawski: Luminus.

BARBARA KRAKOW GALLERY

10 Newbury St., 617-262-4490, barbarakrakovgallery.com. Tue–Sat 10 a.m.–5:30 p.m. The Barbara Krakow Gallery attracts top contemporary artists from around the world, showcasing work that focuses on minimalism and conceptualism. **Special exhibits: through July 29**—Block Parts; One Wall, One Work: Walid Raad.

BOSTON SCULPTORS GALLERY

486 Harrison Ave., 617-482-7781, bostonsculptors.com. Wed–Sun noon–6 p.m. A sculptors’ cooperative that has served as an alternative venue for innovative solo sculpture exhibitions since 1992. **Special exhibit: beginning July 20**—Monsterrat Sculpture.

BRICKBOTTOM GALLERY

1 Fitchburg St., Somerville, 617-776-3410, brickbottomartists.com. Thu–Sat noon–5 p.m. This non-profit exhibition space, established in 1989, is open to emerging and established artists in the Boston area. **Special exhibit:** BAA Members’ Show: Melt.

BROMFIELD ART GALLERY

450 Harrison Ave., 617-451-3605, bromfieldgallery.com. Wed–Sun noon–5 p.m. Boston’s oldest artist-run gallery features shows by members of the cooperative, while exhibitions by visiting artists are selected by current members. **Special exhibits:** Linda Klein; Summer Invitational.

BSA SPACE

290 Congress St., Suite 200, 617-391-4000, architects.org/bsaspace. Mon–Fri 10 a.m.–6 p.m., Sat & Sun ‘til 5 p.m. Boston’s leading center for architecture and design, as well

as home to the Boston Society of Architects and the BSA Foundation. **Special exhibits:** Extraordinary Playscapes; **through Aug 7**—The Other Working Landscape.

COPLEY SOCIETY OF ART

158 Newbury St., 617-536-5049, copleysociety.org. Tue-Sat 11 a.m.-6 p.m., Sun noon-5 p.m. The oldest non-profit art association in the U.S. represents more than 400 living artists and hosts between 15-20 exhibitions each year by contemporary painters, photographers, sculptors and printmakers. **Special exhibits:** Launch; Ken Northup: Cape Reflections; Summer Members' Show: Ship to Shore.

GRAND CIRCLE GALLERY

347 Congress St., 617-346-6459, gct.com. Wed & Fri noon-6 p.m., Thu 'til 7 p.m., Sat 10 a.m.-5 p.m. This Fort Point gallery serves Grand Circle travelers, the community and visitors through travel-related exhibits that teach and inspire. **Special exhibit:** Through the Eyes of Culture: Masks from Around the World.

INTERNATIONAL POSTER GALLERY

The acclaimed fine art poster gallery displays original vintage works from the 1890s through post-World War II modern masters. **Special exhibit:** Summer Getaway! 205 Newbury St., 617-375-0076, internationalposter.com. Mon-Sat 10 a.m.-6 p.m., Sun noon-6 p.m.



MILLER YEZERSKI GALLERY

460 Harrison Ave., 617-262-0550, milleryezerskigallery.com. Tue-Sat 11 a.m.-5:30 p.m. This South End gallery features a wide array of work from contemporary artists, ranging in media from photography to painting. **Special exhibit: through Aug 12**—Frederick Lynch.

SAMSON

450 Harrison Ave./29 Thayer St., 617-357-7177, samsonprojects.com. Wed-Sat 11 a.m.-6 p.m. Samsøen presents programs that explore the diversity of cultures and voices, introducing emerging and under-recognized artists as well as re-contextualizing established artists. **Special exhibits:** Dell M. Hamilton; **through July 17**—Rico Gatson.

FINE VINTAGE POSTERS



INTERNATIONAL POSTER GALLERY
205 NEWBURY STREET
TEL: 617 375 0076
MON-SAT 10-6, SUNDAY NOON-6
WWW.INTERNATIONALPOSTER.COM

RED SOX TICKETS

All Games Available
Same Day Tickets Available

CONCERTS THEATRE

BEST SEATS. LOWEST PRICES.
200% GUARANTEE.



ACETICKET.COM • 1-800-MY-SEATS
FREE HOTEL DELIVERY • FREE EMAIL
FREE & EASY PICK-UP NEAR FENWAY

PANO
PICK



SIDNEY THOMAS JEWELERS

A thrilling experience in luxury awaits at Sidney Thomas Jewelers, which offers the world's most beautiful jewelry and watches, coveted designer brands and magnificent one-of-a-kind pieces along with world-renowned, impeccable service and presentation.

The Shops at Prudential Center, 800 Boylston St., 617-262-0935: Mon-Sat 10 a.m.-9 p.m., Sun 11 a.m.-8 p.m.; The Shops at Chestnut Hill, 617-965-5300: Sat 10 a.m.-8 p.m., Sun noon-6 p.m.; sidneythomas.com.

Art & Antiques

INTERNATIONAL POSTER GALLERY

205 Newbury St., 617-375-0076, internationalposter.com. Mon-Sat 10 a.m.-6 p.m., Sun noon-6 p.m. This acclaimed fine art poster gallery displays original vintage works from the 1890s through post-World War II modern masters.

Audio/Video

BANG & OLUFSEN

141B Newbury St., 617-262-4949, bang-olufsen.com. Mon-Sat 10 a.m.-6 p.m., Sun noon-5 p.m. Bang & Olufsen is Boston's premier electronics showroom. From wireless, noise-canceling headphones to the finest 85" 4K TV on the market, what you see here will amaze you. Stop by to enjoy an experience you will not forget.

Boots & Shoes

HELEN'S LEATHER

110 Charles St., 617-742-2077, helensleather.com. Mon-Sat 10 a.m.-6 p.m., Sun noon-6 p.m. For 40 years, Helen's Leather has sup-

plied New Englanders with quality Western boots by makers like Lucchese, Tony Lama, Justin, Nocona and Frye. In addition, Helen's sells Western belts, buckles, shirts and Stetson hats, as well as leather jackets and bags.

Clothing

MACY'S

450 Washington St., 617-357-3000, macys.com. Sun-Thu 10 a.m.-9 p.m., Fri & Sat 'til 10 p.m. Discover the season's hottest trends, newest styles and best prices. Choose from renowned designers such as Coach, Polo, DKNY, Hugo Boss and more.

PRIMARK

10 Summer St., 617-350-5232, primark.com. Mon-Thu 8 a.m.-9 p.m., Fri & Sat 'til 10 p.m., Sun 10 a.m.-9 p.m. This Dublin-based clothing retailer's first U.S. store resides in the former Filene's building at Downtown Crossing. Adored by fashion fans and value seekers alike, Primark is a great destination for keeping up with the latest looks for less.

UNIQLO

Faneuil Hall Marketplace, 245 Quincy Market Building, 877-486-4756, uniqlo.com. Mon-Sat 10 a.m.-9 p.m., Sun 11 a.m.-7 p.m. Both men and women flock to this Japanese retailer for its signature functional yet innovative clothing available in a wide range of colors and styles.

Gifts & Souvenirs

NEWBURY COMICS

332 Newbury St., 617-236-4930: Mon-Sat 10 a.m.-10 p.m., Sun 11 a.m.-8 p.m.; 36 JFK St. (Garage Mall), Cambridge, 617-491-0337; North Market Building, Faneuil Hall Marketplace, 617-248-9992; newburycomics.com. You'll have a "wicked good time" at this upstart local music store, which carries import, indie and major label releases, as well as T-shirts, comics and other pop culture kitsch items.

TEDDY BALLGAME'S

1 South Station, 617-330-1230. Located at the South Station concierge desk, Teddy Ballgame's offers tours of Boston that leave from South Station, a wide variety of Red

Sox souvenirs, T-shirts and books about the history of Boston.

Gourmet Food & Beverage

BOSTON PUBLIC MARKET

100 Hanover St. (above Haymarket MBTA station), bostonpublicmarket.org. Wed-Sun 8 a.m.-8 p.m. The only locally sourced market of its kind in the United States, this indoor, year-round market features farm-fresh produce, meat, eggs, cheese, fish, baked goods, chocolate, beer, wine, cider, spirits, flowers and an assortment of specialty and prepared foods from 35 Massachusetts and New England vendors.

Jewelry/Accessories

JOHN LEWIS, INC.

97 Newbury St., 617-266-6665. Tue-Sat 11 a.m.-6 p.m. John Lewis has created jewelry of imaginative design in Boston for more than 50 years. Using only solid precious metals and natural stones, Lewis aims "to make jewelry at a reasonable price of excellent workmanship and uncommon beauty."

Forged silver and gold bracelets designed and made by John Lewis

www.johnlewisinc.com

1 800 266 4101

Tues-Sat 11 to 6

Est. 1958

John Lewis 97 Newbury Street
Boston, MA 02116



SCOOP! Over 20 Shops & Eateries

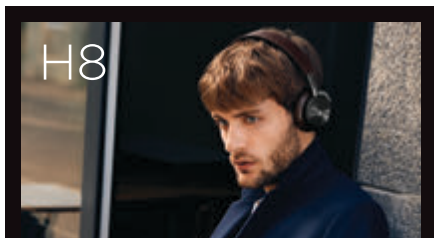


Zermatt Gelateria & Café | Happylemon
Subway | Dunkin' Donuts | Wong's of Boston

Bath & Body Works | Skechers USA | Champs
Lids | Wet Seal | The Jewelry Store and more!

**THE CORNER
MALL**

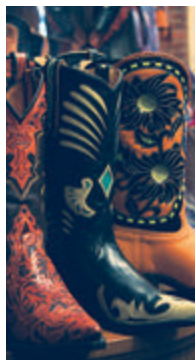
At Boston's
Downtown Crossing
thecornermall.com



Featuring the award-winning H8 wireless,
noise canceling headphones.

Bang & Olufsen Newbury Street

141B Newbury Street, PH 617-262-4949
bang-olufsen.com



COWBOY BOOTS

MEN ♦ WOMEN ♦ KIDS

Lucchese ♦ Justin ♦
Nocona ♦ Tony Lama ♦
Dan Post ♦ Frye ♦ Liberty

STETSON HATS

Shirts ♦ Belts ♦
Buckles ♦ Bolo Ties ♦
Navajo Jewelry

HELEN'S LEATHER

110 Charles St.,
Boston, MA
617.742.2077

LUX BOND & GREEN

416 Boylston St., 617-266-4747,
lbgreen.com. Mon-Fri 10 a.m.-6 p.m., Sat
'til 5 p.m. Since 1898, Lux Bond & Green
has provided its customers with diamonds,
gold jewelry, watches and giftware from
around the world. The store offers a corpo-
rate gift division, bridal and gift registry, a
full-service repair department, gift certifi-
cates and gift wrapping.

Malls/Shopping Centers

COPLEY PLACE

Copley Square, 617-262-6600, simon.com.
Mon-Sat 10 a.m.-8 p.m., Sun noon-6 p.m.
This shopping mecca features more than
100 upscale stores, including Neiman
Marcus, Tiffany & Co., Armani and Williams-
Sonoma, and fine restaurants like Legal
Sea Foods that offer shoppers numerous
dining options.

THE CORNER MALL

In step with your
lifestyle and just
steps away, this
shopping center
boasts more than
20 stores and
eateries—including
favorites like Skechers USA, Champs, Bath &
Body Works, plus an international food court
with Thai Accent, Salsa's Mexican Grill, Dunkin'
Donuts and more. Easily reached by the
MBTA or commuter rail. Corner of Winter and
Washington streets.



FANEUIL HALL MARKETPLACE

617-523-1300, faneuilhallmarketplace.com.
Walk through history and experience New
England's premier visitor destination. Shop
more than 75 locally loved boutiques and
specialty pushcarts, taste diverse ethnic
foods in the Quincy Market Colonnade or
dine in one of 12 full-service restaurants.

THE SHOPS AT PRUDENTIAL CENTER

800 Boylston St., 800-SHOP-PRU,
prudentialcenter.com. Mon-Sat 10 a.m.-
9 p.m., Sun 11 a.m.-8 p.m. The Shops at
Prudential Center features more than
75 stores and restaurants including The
Cheesecake Factory, Saks Fifth Avenue,
Ann Taylor and Barnes & Noble. It's also a
launch spot for the city's renowned tourist
attraction, the Boston Duck Tours.



LONGFELLOW NATIONAL HISTORIC SITE

This 1759 Georgian mansion was home to Henry Wadsworth Longfellow from 1837 to 1882 and a central gathering place for writers and artists in the 19th century. It also served as George Washington's headquarters during the siege of Boston in 1775-76. Original furnishings, books and art from around the world are on display.

105 Brattle St., 617-876-4491, nps.gov/long. Wed-Sun 9:30 a.m.-5 p.m. Tours hourly beginning at 10 a.m. Free admission.

Sights of Interest

CAMBRIDGE COMMON/ OLD BURYING GROUND

Massachusetts Avenue and Garden Street. A grazing pasture and cemetery for Puritan Newtowne, as well as a favorite meeting spot for public figures and a tent site for the Continental Army. Early college presidents and town residents were buried in "God's Acre" across from the Common.

CHRIST CHURCH

Zero Garden St., 617-876-0200, cccambridge.org. Offices open Mon-Fri 9 a.m.-4 p.m. Call for services. This 1761 Tory house of worship was utilized as a Colonial barracks during the American Revolution.

HARVARD AND RADCLIFFE YARDS

Located within Harvard Campus. The centers of two institutions that have played major educational roles since Harvard's founding in 1636.

HARVARD SQUARE/OLD CAMBRIDGE

The center of Cambridge activity since the 17th century, the square is home to Harvard

University, historic buildings, cafes, restaurants and shops.

MOUNT AUBURN CEMETERY

580 Mount Auburn St., 617-547-7105, mountauburn.org. Daily 8 a.m.-6 p.m. Founded in 1831 by the Massachusetts Horticultural Society, Mount Auburn was the first landscaped cemetery in the country. Many prominent Americans are buried here, including Henry Wadsworth Longfellow, Isabella Stewart Gardner and Winslow Homer. The cemetery is also an arboretum, sculpture garden and wildlife sanctuary.

TORY ROW (BRATTLE STREET)

One of the nation's most beautiful residential streets, Tory Row is the site of Loyalist mansions and their elegant neighbors from nearly every period of early American architecture.

Entertainment

THE BRATTLE THEATRE

40 Brattle St., Harvard Square, 617-876-6837, brattlefilm.org. \$11; students &

matinees \$9; seniors & children (under 12) \$8. Classic, cutting-edge and world cinema with double features almost every day.

CLUB PASSIM

47 Palmer St., Harvard Square, 617-492-7679, passim.org. This legendary folk music venue nurtured the early careers of icons like Joan Baez and Bob Dylan.

THE COMEDY STUDIO AT THE HONG KONG

1238 Massachusetts Ave., Harvard Square, 617-661-6507, thecomedystudio.com. Shows begin at 8 p.m. \$10 & 15. Located on the third floor of the Hong Kong restaurant, The Comedy Studio hosts cutting-edge headliners and up-and-coming comedians.

THE MIDDLE EAST

472 Massachusetts Ave., Central Square, 617-864-EAST, mideastoffers.com. Whether Upstairs, Downstairs or in the Corner, this club showcases the best in alternative and indie rock bands.

REGATTABAR

Third floor of The Charles Hotel, 1 Bennett St., 617-661-5000, regattabarjazz.com. Regattabar is the leading jazz club in New England, showcasing performers rarely seen in the Hub.

THE SINCLAIR

52 Church St., 617-547-5200, sinclaircambridge.com. This live music venue and gastropub is located in the heart of Harvard Square.

Theater

THE DONKEY SHOW

American Repertory Theater, Oberon, 2 Arrow St., 617-547-8300, cluboberon.com. **Ongoing.** Performances: Sat at 7:30 and 10:30 p.m. \$25-45. Bringing the ultimate disco experience to Boston, this crazy circus of mirrorballs, feathered divas, roller skaters and hustlers tells the story of A Midsummer Night's Dream through great '70s club anthems.

Museums & Galleries

HARVARD ART MUSEUMS

32 Quincy St., Harvard Square, 617-495-9400, harvardartmuseums.org. Daily 10 a.m.-5 p.m. \$15; seniors \$13; students \$10;

children (18 and under) free. The Harvard Art Museums—the Fogg, Busch-Reisinger and Sackler—and its voluminous collections are now housed in a larger, newly renovated, Renzo Piano-designed facility.

HARVARD MUSEUM OF NATURAL HISTORY

26 Oxford St., 617-495-3045, hmn.harvard.edu. Daily 9 a.m.-5 p.m. \$12; seniors & students \$10; children (3-18) \$8. As Harvard's most visited attraction, the museum features exhibits ranging from mammals, fish and dinosaurs to minerals, gems and meteorites.

MIT LIST VISUAL ARTS CENTER

20 Ames St., 617-253-4680, listart.mit.edu. Tue, Wed & Fri-Sun noon-6 p.m., Thu 'til 8 p.m. Free admission. One of the area's premier showcases for contemporary art, the List Center presents works from the world's leading contemporary artists through its changing exhibitions.

THE MIT MUSEUM

265 Massachusetts Ave., 617-253-5927, web.mit.edu/museum. Daily 10 a.m.-6 p.m. \$10; children, seniors & students \$5; children (under 5) free. Exhibits welcome visitors into the world of MIT to discover the potential of science and technology.

PEABODY MUSEUM OF ARCHAEOLOGY AND ETHNOLOGY

11 Divinity Ave., 617-496-1027, peabody.harvard.edu. Daily 9 a.m.-5 p.m. \$12; seniors & students \$10; children (3-18) \$8. From towering Native American totem poles and large Mayan sculptures to precious artifacts of the ancient world, the Peabody Museum is among the oldest archaeological and ethnographic museums in the world.

Dining

Refer to Dining, page 52, for key to restaurant symbols.

*THE ASGARD IRISH PUB & RESTAURANT

350 Massachusetts Ave., Central Square, 617-577-9100, classicroish.com. Communal tables and a variety of cool, comfortable places to sit—along with an extensive menu, a large craft beer selection, outdoor patio, live music, trivia nights, DJs and no cover charge—make the Asgard a perfect spot for a pint and a meal. Sat & SB. L, D, C. \$

DANTE

Royal Sonesta, 40 Edwin H. Land Blvd., 617-497-4200, restaurantdante.com. Dante de Magistris serves playful, rich Mediterranean-influenced fare as diners savor great views of the Charles River and the Boston skyline. B, L, D, Sat & SB. \$\$\$\$

HENRIETTA'S TABLE

The Charles Hotel, One Bennett St., Harvard Square, 617-661-5005, henriettastable.com. Locally grown and organic produce is used to create a lively, textured menu of reinterpreted New England classics. Private dining room available. B, L, D, Sat & SB. \$\$\$\$

NUBAR

Sheraton Commander Hotel, 16 Garden St., Harvard Square, 617-234-1365, nubarcambridge.com. This restaurant and lounge offers New England-style cuisine in a fresh, modern setting and casual atmosphere. B, L, D, SB. \$\$\$

RUSSELL HOUSE TAVERN

14 JFK St., Harvard Square, 617-500-3055, russellhousecambridge.com. Executive Chef Thomas Borgia's menu is seasonally inspired, interpreting American classics like the crispy-fried Cape Cod oysters with a modern flair. The bar serves all-American wines, local crafts beers and hand-crafted cocktails. L, D, SB, LS, C. \$\$\$

ZEPHYR ON THE CHARLES

Hyatt Regency Cambridge, Kendall Square, 575 Memorial Drive, 617-441-6510. This restaurant serves a traditional menu of local favorites—including New England clam chowder and the lobster roll—loaded with flavor and flair. B, L, D, C. \$\$\$



ABOVE PHOTO: MEGHAN RANDALL

ZOE'S

This '50s style diner offers a menu of delicious homemade Greek and American food. Serving breakfast all day, Zoe's is a popular destination for the weekend brunch crowd. 1105 Massachusetts Ave., Harvard Square, 617-495-0055, zoescambridge.com. B, L, D, SB. \$



Shopping

CAMBRIDGESIDE GALLERIA

100 CambridgeSide Place, Lechmere Square, 617-621-8666, cambridgesidegalleria.com. Mon-Sat 10 a.m.-9 p.m., Sun noon-7 p.m. This three-level mall features department stores such as Macy's and H&M, as well as more than 100 other shops, including Gap, J. Crew and Aldo, and eateries like P.F. Chang's and the new World of Beer.

THE GARMENT DISTRICT

200 Broadway, 617-876-5230, garmentdistrict.com. Sun-Fri 11 a.m.-8 p.m., Sat 9 a.m.-8 p.m. A vintage lover's paradise, this two-level thrift warehouse sells everything from time-honored Levi's to '70s go-go boots. Also sift through heaping piles of By-the-Pound clothing, available for \$2 per pound.

THE HARVARD COOP

1400 Massachusetts Ave., 617-499-2000, store.thecoop.com. Mon-Sat 9 a.m.-9 p.m., Sun 10 a.m.-7 p.m. America's largest college bookstore, located in Harvard Square, offers a wide selection of official Harvard clothing, souvenirs and four floors of books for all ages.

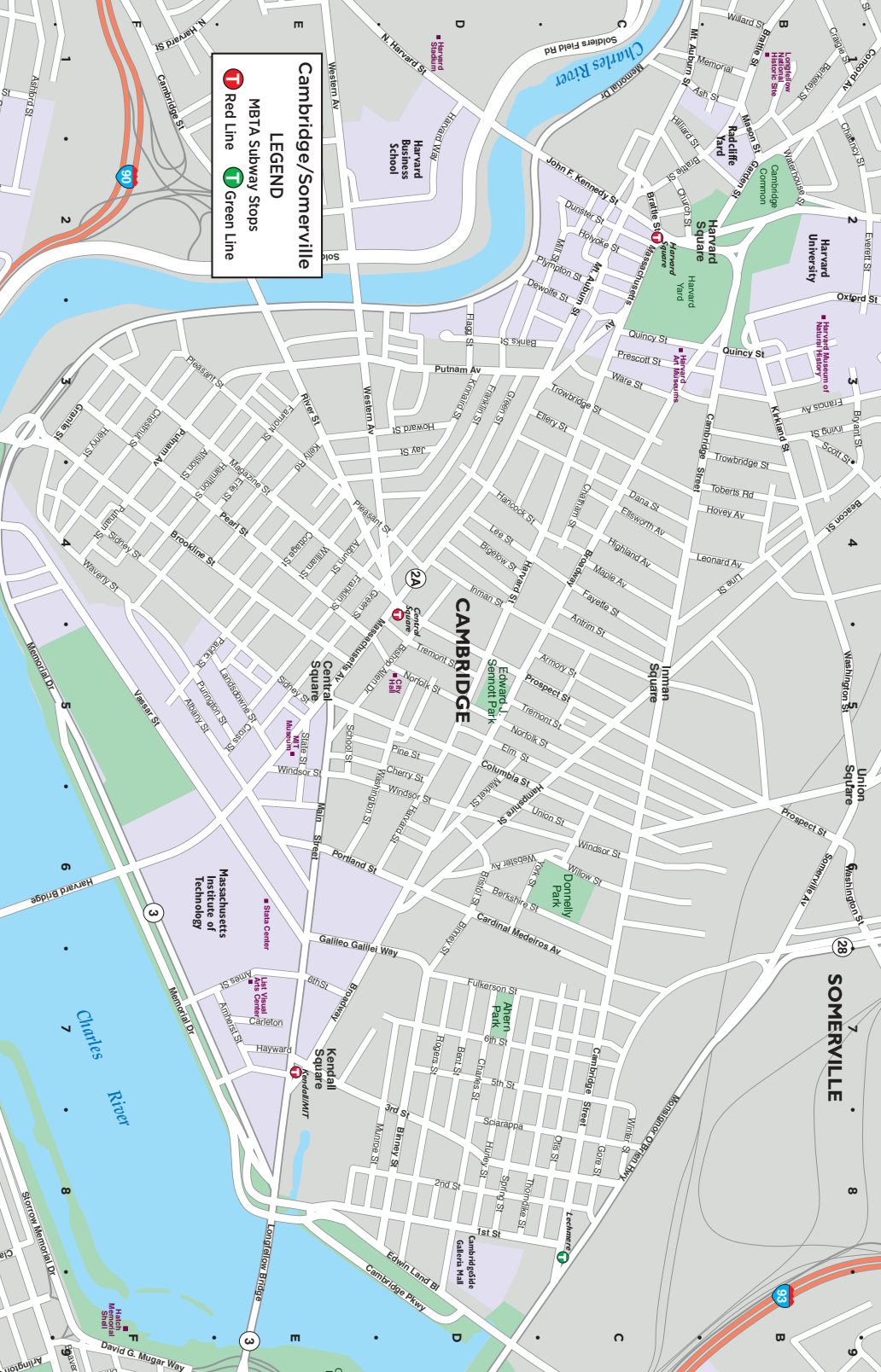
There's something for everyone!

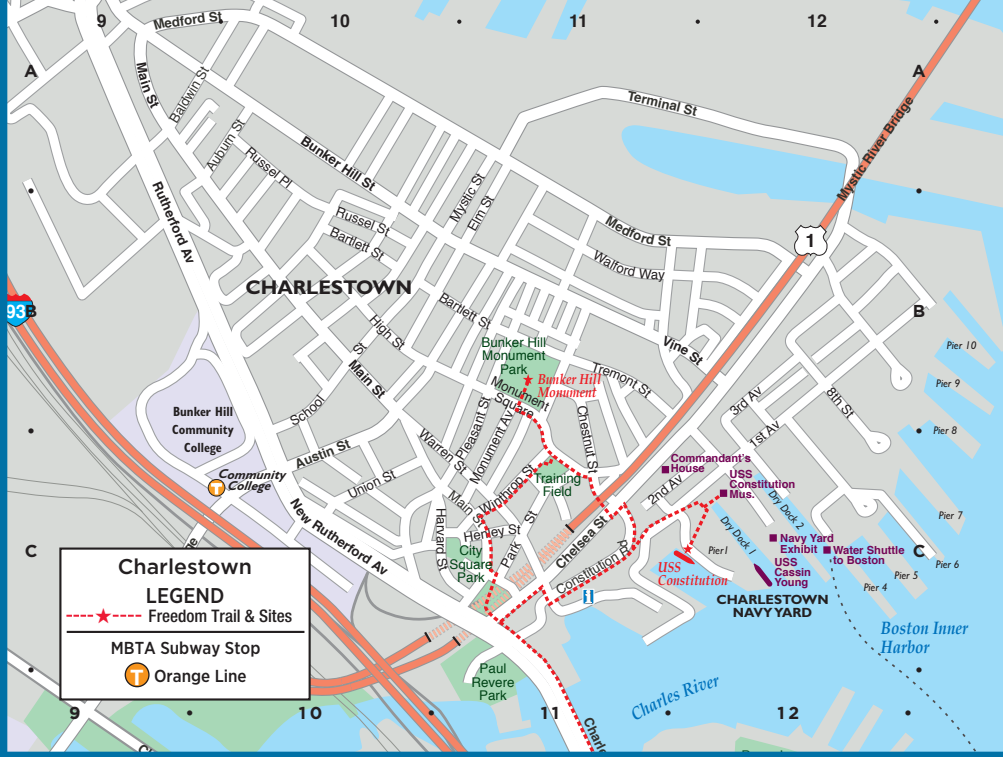
- Greek specialties • Breakfast is served all day!

MONDAY THRU SATURDAY 7:30 AM TO 10:00 PM
SUNDAY 8:00 AM TO 9:00 PM

**1105 Massachusetts Ave.
Cambridge • 617-495-0055**

Cambridge/Somerville
LEGEND
 MBTA Subway Stoops
 Red Line
 Green Line







CHARLESTOWN
(see page 31)

WEST END
BOSTON

CAMBRIDGE
(see page 30)

**FENWAY/
KENMORE SQUARE**
(see page 31)

BACK BAY

Boston Common

THEATRE DISTRICT

Copley Place

SOUTH END

Museum of Fine Arts
(see page 31)

Malden St



LEGEND	
	Freedom Trail & Sites
	Pedestrian Area
MBTA Subway Stops	
	Red Line
	Orange Line
	Blue Line
	Green Line
	Silver Line



CHARLES RIVER

NORTH END

DOWNTOWN CROSSING

FINANCIAL DISTRICT

SOUTH BOSTON

EAST BOSTON

SEAPORT DISTRICT/ SOUTH BOSTON WATERFRONT

Boston Inner Harbor

Freedom Trail & Sites

MBTA Subway Stops

Pedestrian Area

LEGEND

Red Line

Orange Line

Blue Line

Green Line

Silver Line

0 1000ft

MAP INDEX

POINTS OF INTEREST

African Meeting House F10
 Arlington Street Church G9
 Back Bay Station H8
 Berklee College of Music H7
 Berklee Performance Center H7
 Black Falcon Cruise Port I15
 Black Heritage Trail F10
 Blue Hills Bank Pavilion H14
 Boston Center for the Arts I9
 Boston City Hall F11
 Boston Common G10
 Boston Convention & Exhibition Ctr. I13
 Boston Design Center I15
 Boston Massacre Site F11
 Boston Public Library H8
 Boston Tea Party Ships & Museum G12
 Boston University H4
 Bunker Hill Monument (Charlestown map) B11
 Bunker Hill Pavilion (Charlestown map) B11
 Central Burying Ground G10
 Charles Playhouse H10
 Charlestown Navy Yard (Charlestown map) C12
 Cheers Bar G9
 Children's Museum G12
 Christian Science Plaza I7
 Christopher Columbus Park F12
 Citgo Sign H5
 Citi Performing Arts Center H10
 Colonial Theatre G10
 Conference Center at Harvard Medical J2
 Copley Place H8
 Copley Square H8
 Copp's Hill Burying Ground D12
 Custom House Tower F12
 Cutler Majestic Theatre G10
 Downtown Crossing G11
 Emerald Necklace J1-J11
 Emerson College G10
 Emmanuel College J4
 Exchange Conference Ctr. G14
 Faneuil Hall F11
 Fenway Park H5
 Freedom Trail - - - - F10
 Government Center F11
 Granary Buryal Ground F11
 Harvard Stadium D1
 Hatch Memorial Shell F9
 Haymarket (Open-air market) E11
 Horticultural Hall I7
 Huntington Theatre Co./BU Theatre J7
 Hynes Convention Center H7

Information Centers:
 Boston Common F10
 Prudential Center H8
 National Park Service F11
 Logan Airport (Terminals A & E) E16, F16
 Institute of Contemporary Art G13
 International Place F12
 Isabella Stewart Gardner Museum J5
 JFK Federal Building E11
 John Hancock Tower H9
 Jordan Hall I7
 Jorge Hernandez Cultural Center J8
 Joseph Moakley Courthouse G13
 Kenmore Square H5
 Kings Chapel & Burial Ground F11
 Lansdowne Street H5
 Louisburg Square F9
 Mary Baker Eddy Library I7

Mass. College of Art J5
 Museum of African-American History F10
 Museum of Fine Arts J6
 Museum of Science D9
 New England Aquarium F12
 New England Conservatory of Music I7
 New Old South Church H8
 North Station D10
 Northeastern University J6
 Old City Hall F11
 Old Corner Bookstore F11
 Old North Church D12
 Old South Meeting House F11
 Old State House F11
 The Opera House G10
 Park Street Church F11
 Park Street Station F11
 Paul Revere House E12
 Paul Revere Mall E12
 Post Office Square F12
 Prudential Center H8
 The Public Garden (Swan Boats) G9
 Quincy Market F12
 Robert Gould Shaw Memorial F10
 Rose Kennedy Greenway E11-E12
 Rowes Wharf F12
 Shubert Theatre H10
 Sightseeing boats F12
 Simmons College J5
 South Station Information Center G12
 State House F10
 Suffolk University F10
 Symphony Hall I7
 TD Garden D11
 Tip O'Neill Building D11
 Transportation Building G10
 Trinity Church H9
 USS Constitution (Charlestown map) C12
 USS Constitution Museum (Charlestown map) C12
 Water Transportation Terminal G12
 Wheelock College I4
 Wilbur Theatre G10
 World Trade Center G14

CAMBRIDGE MAP

Cambridge City Hall D5
 CambridgeSide Galleria D8
 Harvard Art Museums C3
 Harvard Museum of Natural History B3
 Harvard Square C2
 Harvard University B2
 MIT F6

HEALTHCARE

Beth Israel Deaconess Med. Ctr. J4
 Boston Medical Center J9
 Brigham & Women's Hosp. J5
 Children's Hospital J4
 Dana Farber Cancer Institute J4
 Harvard School of Public Health J5
 Joslin Diabetes Center I4
 Longwood Medical area J4
 Mass. Eye & Ear Infirmary E9
 Mass. General Hospital E9
 Tufts Medical Ctr. H10
 Spaulding Rehabilitation Hosp. D10

BOSTON LODGING

Aloft Boston Seaport I13
 Ames Hotel F11
 Battery Wharf Hotel D12
 Best Western Boston I4
 Best Western Roundhouse Suites J9

Boston Harbor Hotel F12
 Boston Marriott/Copley Place H8
 Boston Marriott/Long Wharf F12
 Boston Park Plaza G9
 The Boxer Boston D10
 Charlesmark Hotel H8
 Club Quarters F11
 The Colonnade H8
 Copley Square Hotel H8
 Courtyard Boston Downtown H10
 Doubletree Club Hotel Boston Downtown G11
 Doubletree Guest Suites E2
 Element Boston/Financial District I13
 Eliot Suite Hotel H6
 The Envoy Hotel G13
 The Fairmont Copley Plaza H8
 XV Beacon F10
 Four Seasons Hotel G10
 The Godfrey Hotel Boston J1
 Hampton Inn, Crosstown Center F9
 The Harborside Inn F12
 Hilton Boston Back Bay H7
 Hilton Boston/Financial District F12
 Holiday Inn Express & Suites E11
 Holiday Inn/Brookline I2
 Holiday Inn/Somerville B7
 Hotel Buckminster H5
 Hotel Commonwealth H5
 Hyatt Regency Boston, Financial District G11
 InterContinental Boston Hotel G12
 John Hancock Conference Center H9
 Langham Hotel, Boston F12
 Liberty Hotel E10
 Lenox Hotel H8
 Loews Boston Hotel H9
 Mandarin Oriental Boston H7
 Marriott's Custom House F12
 The Midtown Hotel I7
 Millennium Bostonian Hotel E11
 Milner Hotel H10
 NINE ZERO Hotel F11
 Omni Parker House F11
 Onyx Hotel E11
 Revere Hotel H10
 Renaissance Boston Waterfront Hotel G12
 Residence Inn by Marriott on Tudor Wharf C11
 Ritz Carlton Boston Common G10
 Seaport Hotel G14
 Sheraton Boston H7
 Taj Boston G9
 The Verb Hotel I6
 W Hotel Boston G10
 Westin Hotel/Copley Place H8
 Westin Waterfront Hotel I13
 Wyndham Boston Beacon Hill E10

CAMBRIDGE LODGING

Charles Hotel B1
 Hampton Inn/Cambridge C8
 Harvard Square Hotel C8
 Hotel Marlowe C2
 Hotel Veritas C3
 Hyatt Regency/Cambridge G4
 Marriott/Cambridge Center E7
 Radisson Hotel/Cambridge F7
 Residence Inn by Marriott/Cambridge E3
 Royal Sonesta D9
 Sheraton Commander B2



MASSACHUSETTS BAY TRANSPORTATION AUTHORITY RAPID TRANSIT/ KEY BUS ROUTES MAP



Legend

- RED LINE
- MATTAPAN LINE
- ORANGE LINE
- BLUE LINE
- GREEN LINE and branches
- SILVER LINE and branches
- COMMUTER RAIL
- Accessible station (MBTA and Massport bus and ferry services are accessible)
- Free Logan Airport shuttle bus
- Amtrak service (back Bay North & South Stations)
- Customer Communications & Travel Info (617-222-3200, 1-800-392-6100, TTY 617-222-3148, Web site www.mbta.com)
- KEY BUS ROUTE (Prepaid Service)
- Rapid transit transfer station
- MBTA Transit Police (617-222-1212, TTY 617-222-1200)
- Commuter rail transfer station
- Ferry
- Elevation calculator link updates: 800-392-6100

© April 2014 v22

Fares & Passes

The MBTA offers a reusable "Charlie Card" on which riders can store value by using cash or a debit/credit card through kiosks available in all MBTA stations. A Charlie Card, which presently can only be used on the Subway and Bus lines, offers a discounted fare. Riders may also purchase single-ride Charlie Tickets and Day/Week Link Passes at these same kiosks.

Subway Fares

- \$2.25** Charlie Card
- \$2.75** Charlie Ticket
- Plus FREE subway and local bus transfers*

Bus Fares

- \$1.70** Charlie Card
- Plus FREE bus transfers*
- \$4** Inner Express
- \$5.25** Outer Express

- \$2** Charlie Ticket
- \$5** Inner Express
- \$7** Outer Express

Commuter Rail

- \$2.25-12.50**
- Price depends on distance traveled. When purchasing a ticket on a train you may be subject to a \$2 surcharge during peak hours, if that station has a ticket office or contracted vendor.

Boat Fares

- \$3.50** Inner Harbor Ferry
- \$9.25** Cross-Harbor Ferry
- \$9.25** Commuter Boat
- \$18.50** Logan Airport Ferry

Day/Week LinkPass

- \$12** for 1 day
- \$21.25** for 7 days
- Unlimited travel on Subway, Local Bus, Inner Harbor Ferry and Commuter Rail Zone 1A. 7-Day Pass valid for 7 days from the date and time of purchase.

MBTA Customer Support:

617-222-3200 or
visit mbta.com



Massachusetts State House



The Back Bay skyline at night

Beacon Hill

MAP PAGE 32 | F10

Strolling along Beacon Hill's picturesque gas-lit streets, brick sidewalks and Federal-style row houses, it's not uncommon to feel as though you've traveled back in time. Both eminently posh and utterly accommodating, this area has borne witness to much of the city's storied past.

The State House—with its gleaming gold dome—sits on the peak of the hill where the beacon for which the district was named used to reside. In this neighborhood, visitors can also find the **African Meeting House**, which holds the **Museum of African-American History**, as well as the **Bull and Finch Pub**, the inspiration for the popular TV show, "Cheers." **Charles Street**, located at the flat of the hill, is lined with boutiques, restaurants, cafes and charming hotels. Locals descend the hill daily to enjoy all that Charles Street has to offer, adding to the feeling of small-town charm.

ON THE T

Green Line to Park St.
Red Line to Park St.,
 Charles St.
Blue Line to Bowdoin

Back Bay

MAP PAGE 32 | G9

Exquisite architecture and world-class retailers are plentiful in Boston's most well-known neighborhood. The Victorian brick and brownstone residences that line the streets are not only beautiful, they're widely regarded as the best-preserved examples of 19th-century urban design in the United States. **Newbury** and **Boylston streets**, where luxury shops vie for space amidst outstanding restaurants, welcome visitors and residents alike. Back Bay is also home to the iconic **Prudential Tower**, **Trinity Church**, **Boston Public Library**, the **John Hancock Tower** and two sprawling shopping malls connected by a climate-controlled bridge. You'll also find standout salons, spas, antique shops and galleries throughout. Nightlife thrives in Back Bay as well, where chic hotel bars, world-class restaurants and swanky lounges abound.

ON THE T

Orange Line to Back Bay
Green Line to Arlington,
 Copley or Hynes
 Convention Center



Old North Church



Downtown Crossing/
Theatre District

North End

MAP PAGE 33 | E12

Italian culture reigns in the North End, Boston's oldest and busiest neighborhood. The sweet scent of fresh cannoli rises from countless Italian bakeries that populate this district's narrow cobblestone streets, while the veritable buffet of dining choices will have you wishing there were more than three meals to enjoy in a day. Recently, clothing and home decor boutiques have been setting up shop here, making the North End an even more diverse and desirable destination. Don't even try to find a parking space—it's best to hop on the T or walk. If you happen to be strolling the **Freedom Trail**, you'll discover three of the North End's most important historical sites: The **Paul Revere House**, **Copp's Hill Burying Ground** and the **Old North Church**. Summertime brings people into the streets to celebrate various Italian feasts with music, socializing and, of course, sensational food.

ON THE T

Orange Line or
Green Line to
Haymarket

Downtown Crossing

MAP PAGE 32 & 33 | F-11

In the heart of Boston, Downtown Crossing is where it's happening. Enjoy a variety of exciting retailers, including a **PAUL bakery**, **GAP Factory store**, flagship **Roche Bros.** supermarket and a **Primark** department store. The area also boasts numerous attractions, including the historic **Theatre District**. The **Ladder District** features a growing restaurant scene while the pedestrian-friendly center of the neighborhood hosts New England's largest **Jewelers District** and **Macy's** flagship Boston store. The popular **Freedom Trail** courses through Downtown, while its **Financial District** is home to a growing roster of tech start-ups and the acclaimed **Post Office Square**. One of the most walkable districts in the country, Downtown Crossing is easily reached via MBTA subway and bus lines and includes several Hubway bike-rental stations.

ON THE T

Orange Line or Red Line
to Downtown Crossing
Green Line or Red Line
to Park St.



Fenway Park



Union Park

The Fenway

MAP PAGE 31

Just south of the Charles River lies Boston's axis of entertainment, the Fenway. What was once a marshy wetland is now a thriving center of nightlife, arts and, of course, **Fenway Park**, home of the beloved Boston Red Sox. The Fenway district is often referred to as the Kenmore Square area and can easily be accessed from the T's Green Line. **Lansdowne Street**, located right next to Fenway Park, is a prime attraction and boasts an impressive number of bars and dance clubs, including the famed **Cask 'n Flagon**, **House of Blues** and **The Bleacher Bar**. If you're looking for a calmer cultural scene, the **Museum of Fine Arts**, **Isabella Stewart Gardner Museum** and **Symphony Hall** offer a welcome retreat from the hubbub. And if you don't have time to explore Fenway's many social and cultural offerings, you can still look up and appreciate Boston's famed **CITGO sign** hovering above it all.

ON THE T

Green Line to Fenway, Kenmore, Museum of Fine Arts

South End

MAP PAGE 32 | 19

From award-winning restaurants to a throng of hip boutiques, the South End is one of the city's premier cultural hot spots, boasting a thriving theater scene, as well as one of the largest gay communities in New England. Along its notably scenic streets, you'll find elegant brick row houses, charming bakeries and scrupulously maintained private gardens. Follow **Tremont Street** to some of Boston's quirkiest shops, as well as a bevy of international dining options. Exceptional plays and musical performances are found at both the **Boston Center for the Arts** and the **Calderwood Pavilion**, while numerous arts events and interesting trade shows constantly overtake the **Cyclorama**—a 23,000 square-foot dome that first opened in 1865. With its avant-garde beauty and bohemian culture, the South End should be on any visitor's to-do list.

ON THE T

Orange Line to Back Bay/South End
Silver Line to E. Berkeley through Mass. Ave.



Boston Harborwalk/
Institute of Contemporary Art



Bunker Hill Monument

Seaport District

MAP PAGE 33 | H14

The Seaport District is an eclectic hub of technological innovation, artistic activity and high-end dining frequented by business people and wide-eyed sightseers alike. Everything from the massive **Seaport World Trade Center**—an awe-inspiring structure that plays host to numerous expos and events—and the historic **Boston Fish Pier** to the charming **Fort Point Arts Community** can be found in this lively district. Those looking to relax can walk the **Boston Harborwalk's** verdant paths or wander the numerous wharfs and piers that pepper this scenic community. Shiny new hotels, an exciting new guard of restaurants and an active arts colony combine to create one of Boston's most unique neighborhoods. From small, welcoming galleries to the famed **Boston Children's Museum** and the **Institute of Contemporary Art**, the Seaport District has a venue for absolutely every taste.

ON THE 

Silver Line to World Trade Center

Charlestown

MAP PAGE 31

Located just across the Charles River from the North End and bordered by the Mystic River to the north, Charlestown, founded in 1629, is Boston's most historic neighborhood. Two of the famed **Freedom Trail's** most beloved sites—the **Bunker Hill Monument**, site of a pivotal Revolutionary War battle, and “Old Ironsides” herself, the **U.S.S. Constitution**, which is the world's oldest commissioned warship—are located here. Both sites also boast free museums. A variety of restaurants and shops can be found both near the waterfront area surrounding the historic **Charlestown Navy Yard**, in bustling **City Square** and amongst the well-preserved Colonial architecture along Main Street, where you can find the **Warren Tavern**, America's oldest watering hole and a local staple that has hosted the likes of Paul Revere, George Washington and Benjamin Franklin since its 1780 debut.

ON THE 

Orange Line to Community College



THINKING OF MOVING TO BOSTON?

Good idea! Boston is known for its vital historical sites; the distinctive and well-preserved architecture of the Back Bay, South End and Beacon Hill; its dozens of prestigious colleges and universities, leading research hospitals and reputation as the “Silicon Valley of the East.” Add a vibrant arts scene, championship sports teams and easy-to-use public transportation and you start to understand why Boston is one of the best cities in the world for urban living! It’s no wonder the Hub is growing by leaps and bounds. Welcome to Boston!

BOSTON BY THE NUMBERS

1630	35	77	51.4°
Year Boston was founded.	Number of colleges and universities in Boston.	Number of hospitals in the Boston area.	Average temperature, in Fahrenheit.
669,294	Estimated Boston population for 2016.	\$475K	Median value of a single-family home in Boston (2015).
27	Number of private schools in Boston.	8:1	Student-to-teacher ratio.
	>>	\$972,000	Median price of a home in the Back Bay (2016).
80	Number of residential projects currently under development in Boston.	14,199	Number of new units.
	>>	22,321,715	Total square feet.

Six Things You Didn't Know about Boston

BOSTON WAS ORIGINALLY A PENINSULA

Named Shawmut by Native Americans, the original English settlers re-named the city after Boston, England.

THE BACK BAY WAS ONCE UNDERWATER

Before being created in the 1800s through an extensive landfill project, Boston's stately Victorian neighborhood was a tidal flat on the Charles River that was exposed at low tide.

BEACON HILL ONCE HAD TWO SIBLINGS

Beacon Hill, a bastion of Brahmin Boston, was once not only taller, but was flanked by two other hills—Pemberton Hill and Mount Vernon—that were taken down and used to help expand the neighborhood.

THE SOUTH END IS A BEAUTIFULLY PRESERVED LIVING MUSEUM

The South End, built on landfill between 1850 and 1873 as one of Boston's first large-scale planned neighborhoods, was listed on the National Register of Historic Places in 1973 as the largest urban Victorian neighborhood in the country, representing over 300 acres. It was designated a landmark district by the city in 1983.

BOSTON HAS NINE DESIGNATED HISTORIC DISTRICTS

Each district has its own commission dedicated to help preserve the unique historic and architectural character of these areas, which include the Back Bay, Bay Village, Beacon Hill, Fort Point and the South End.

MANY OF BOSTON'S NEIGHBORHOODS WERE ONCE SEPARATE TOWNS

This includes Charlestown, Brighton, Dorchester, Roxbury, West Roxbury and Hyde Park, which were all annexed by Boston in the late 1800s and early 1900s.

USEFUL LINKS

- For upcoming events and information: bostonguide.com and bostonusa.com
- For real estate listings: albertlynchrealestate.com,
- For city services and amenities: cityofboston.gov
- For information on the state: mass.gov
- For information on public transportation: mbta.com

BOSTON'S NUMBER ONE REAL ESTATE OFFICE*

波士顿头号房地产公司

Please contact us for all of
your real estate needs

请联系我们，
以满足您的所有房地产需求

Representing properties in
Greater Boston and the suburbs
代理大波士顿及其郊区的房地产

* In dollar volume



ALBERT LYNCH
646.620.9173

albert.lynch@nemoves.com
www.albertlynchrealestate.com

MEMBER ASIAN REAL ESTATE
ASSOCIATION OF AMERICA

美国亚裔房地产协会会员



Multilingual office. Cantonese, Mandarin,
Spanish and other languages spoken.



科威国际不动产



BOSTON UPPER DECK TROLLEY TOURS

Boston's upper deck "Green" and eco-conscious trolley fleet provides superior views and comfort as you visit Boston and Cambridge's historic sights. The Boston, Seaport and Cambridge loops include 26 convenient stops covering more than 100 points of interest. Premium tickets include a free second day on the trolley and your choice of free admission to two of the following venues: The Harvard Museum of Natural History, the MIT Museum or the Institute of Contemporary Art.

617-742-1440. Tours depart daily from 9 a.m.–4 p.m. approximately every 25–30 minutes; schedule is subject to change, visit bostonsupertours.com or call ahead for availability. Tickets can be purchased aboard trolleys or at various locations throughout the city. Basic tickets: \$37.14; military, seniors & students \$28.57; children (3–11) \$19.05; children (under 3) free; premium tickets: \$56.19; military, seniors & students \$47.62; children (3–11) \$32.38; children (under 3) free.

Sights of Interest

BOSTON ATHENÆUM

10½ Beacon St., 617-227-0270. Mon–Thu 9 a.m.–8 p.m., Fri 'til 5:30 p.m., Sat 'til 4 p.m., Sun noon–4 p.m. Art & Architecture tours: Tue & Thu at 3 p.m. Reservations required. One of the oldest and most distinguished private libraries in the United States, the Athenæum was founded in 1807. For nearly half a century, it was the unchallenged center of intellectual life in Boston, and by 1851 it had become one of the five largest libraries in the country. **Special exhibit:** Collecting for the Boston Athenæum in the 21st Century: Prints & Photographs.

BOSTON HARBOR ISLANDS

617-223-8666, bostonharborislands.org; ferry tickets: 617-227-4321 or bostonharborcruises.com. Islands accessible by daily ferries: Georges and Spectacle. The Boston Harbor Islands National Park area features 34 islands encompassing 1,600 acres and 35 miles of coastline all within 10 miles of downtown Boston. Hiking trails, beaches, ranger-led tours, camping, kayaking, nature walks, historic sites and free

daily programs are just minutes away by ferry. Explore the beauty, tranquility, history and outdoor activities that await you.

BOSTON PUBLIC GARDEN

Bordered by Arlington, Charles, Beacon and Boylston streets. Open daily dawn to dusk. Established in 1837, the Public Garden is the nation's first public botanical garden. Its 24 acres are filled with scenic and diverse greenery, as well as sculptures, including one that commemorates the popular children's book *Make Way for Ducklings*. Other fixtures include the Lagoon, home to the famed Swan Boats from April through September.

BOSTON PUBLIC LIBRARY

700 Boylston St., Copley Square, 617-536-5400. Mon–Thu 9 a.m.–9 p.m., Fri & Sat 'til 5 p.m., Sun 1–5 p.m. Free admission. Art & Architecture tours: Mon at 2:30 p.m.; Tue & Thu at 6 p.m.; Wed, Fri & Sat at 11 a.m.; Sun at 2 p.m. The first publicly supported municipal library in the world hosts one million visitors a year, who come to view this architectural masterpiece and its collection of more than five million books.

HOP ON & HOP OFF

Boston's Premier Trolley Tours

Live Narrated Tours
Sit high above the city for
Boston's Best unobstructed views!

Come see the Best of
Boston & Cambridge!

**YES!...The ONLY Trolley
Company that tours
Harvard Square**

Boston's Best **PLANNING GUIDE**

FREE

Bonus Tours may be substituted.
No refunds or substitutions if bonus tours are unavailable.

1 DAY TICKET

- Valid for All three Tour Loops *Approx. times
- Boston Loop - 135 minutes*
- Seaport Loop - Approx. 45 minutes*
- Harvard Sq Loop - 25 minutes each way*
- Longest tour routes, see it all!

WINTER SPECIAL NOV. 1st - MAY 15th

Add an Extra **FREE** tour day to all
existing trolley tours during
November 1st - May 15th

2 DAY TICKET - Best Value (Save \$25pp)

Valid for 2 Consecutive Days - All Loops

- 2 Choices: Select 1 from A and 1 from B
- Choice A - BHC Harbor Tour or Charles River Boat Cruise
 - Choice B - Institute of Contemporary Art, MIT Museum, Harvard Museum of Natural History

DAILY SPECIALS

SEE SUPER TOUR TICKET BOOTHS
FOR DAILY SUPER TOUR
UNADVERTISED SPECIALS



P

**\$4 ALL DAY
PARKING**

(SEE INSIDE FOR DETAILS)

SEE YOUR HOTEL CONCIERGE FOR TICKETS!
If not available through your hotel,
tickets may be purchased
at anytime, on any trolley. Don't settle for less!

A Proud Member of



DOWNTOWN CROSSING:

WHERE THE
FRANCISCAN CHARISM MEETS
CONCERT-QUALITY MUSIC



The Arch Street Band at St. Anthony Shrine

MASS SCHEDULE

Saturday Vigil Masses

4 p.m. ♪,
4:15 p.m. (in the 1st Floor Church),
5:30 p.m. ♪

Sunday Masses

6 a.m., 7:30 a.m., 9 a.m.,
10 a.m. ♪, 11:15 a.m. ♪,
Noon (in Spanish in the 1st Floor Church),
12:30 p.m. ♪, 4 p.m. ♪, 5:30 p.m. ♪

♪ Indicates music by The Arch Street Band.



St. Anthony Shrine
& Ministry Center

100 Arch Street, Boston
617-542-6440 • stanthonyshrine.org
Follow us @ShrineBoston



Film festivals, exhibits and children's programs run throughout the year.

BOSTON TEA PARTY SHIPS & MUSEUM

Congress Street Bridge, 855-832-1773, bostonteatpartyship.com. Daily 10 a.m.–5 p.m. \$25; seniors, students & military \$22; children (4–12) \$15; children (3 and under) free. The Boston Tea Party Ships & Museum is dedicated to accurately reliving the famous event of December 16, 1773. With a new state-of-the-art museum and authentic replica ships (the *Beaver* and the *Eleanor*), the attraction invites visitors to travel back in time to learn and experience the courageous acts of those who forever shaped the course of history.

THE FIRST CHURCH OF CHRIST, SCIENTIST

210 Massachusetts Ave., 617-450-2000. Free tours of The Mother Church Tue noon–4 p.m., Wed 1–4 p.m., Thu–Sat noon–5 p.m. and Sun 11 a.m.–3 p.m., every half hour. Services: Sun at 10 a.m. and 5 p.m. The original Mother Church built in 1894 is at the heart of the Christian Science Center, situated on 14 acres in the Back Bay. The Romanesque structure is made from New Hampshire granite with stained glass windows illustrating Biblical events.

THE SKYWALK OBSERVATORY AT THE PRUDENTIAL CENTER

800 Boylston St., Prudential Tower, 50th floor, 617-859-0648. Daily 10 a.m.–10 p.m. Admission (including a headset audio tour of points of interest): \$18; seniors \$15; students (with college ID) \$14; children (under 12) \$13. Observatory may be closed due to weather conditions; please call ahead. New England's premier observatory offers spectacular 360-degree panoramic views of the city. This unique experience is a must for all Boston visitors, and boasts an audio tour, multimedia theater, the Dreams of Freedom: Boston's Immigrant Experience exhibit and much more.

ST. ANTHONY SHRINE

100 Arch St., 617-542-6440. Daily 5:30 a.m.–7 p.m. Visit stanthonyshrine.org for a full Mass schedule. Directed by the Franciscan friars of Holy Name Province and inspired by the enduring legacy of St. Francis of Assisi, this Catholic ministry has been a Downtown Crossing landmark since 1947 and offers daily Masses—including seven music Masses

featuring The Arch Street Band—and a comprehensive outreach program.

SWAN BOATS

Public Garden Lagoon, 617-522-1966, swanboats.com. Daily 10 a.m.–4 p.m. \$3.50; seniors \$3; children (2–15) \$2.50. One of Boston's oldest and most treasured traditions, these pedal-powered boats take visitors on a leisurely cruise around the Public Garden Lagoon.

INSIDE TIP: Robert Paget created the first Swan Boats in 1877. His fourth generation descendants operate the updated versions today.

TRINITY CHURCH

206 Clarendon St., Copley Square, 617-536-0944. Wed 9 a.m.–6 p.m., Thu–Sat 'til 5 p.m., Sun 1–6 p.m. Worship services: Sun 7:45, 9 and 11:15 a.m., 6 p.m. Guided tours: \$7; seniors & students (with ID) \$5; children (under 16) free with an adult; call for times. Built in 1877, this house of worship is a combination of Victorian, Gothic and French Romanesque styles and is one of the great masterpieces of American church architecture.

Tours and Trails

ANTIQUE LIMOUSINE

617-309-6414. bostontours-antiquelimo.com. Tours by appointment only. Enjoy historic Freedom Trail tours in a 1939 Cadillac eight-passenger limousine, just like the Godfather's car. Get close to the sights where the trolleys and duck tours can't. The drivers dress, speak and act the part—just don't mess with them or you might be riding in the trunk! They'll make you an offer you can't refuse. Ask about their specials.

BLACK HERITAGE TRAIL

46 Joy St., 617-725-5415. Free tours by appointment only. Call at least 24 hours in advance for reservations. Visit afroamuseum.org for site descriptions. A guided tour through the north side of Beacon Hill, including the homes of politicians and entrepreneurs; the African Meeting House, built in 1806; the oldest standing house built by an African-American (1797); and the home of Lewis and Harriet Hayden, who harbored runaway slaves. Maps are available at the Museum of African American History.

The
first
place
to see
Boston



See Boston like you've never seen it, at the Skywalk Observatory. Interesting displays including "Dreams of Freedom," featuring the Boston immigrant experience. Informative audio tour and a theater featuring "Wings Over Boston." Located at The Prudential Center, 800 Boylston Street, Boston | 617-859-0648

skywalk
observatory
Prudential Center

skywalkboston.com

SIGHTSEEING

FENWAY PARK TOURS

4 Yawkey Way, 617-226-6666. Tours leave daily, every hour on the hour, 10 a.m.–5 p.m., except game days. \$18; military \$15; children (3–12) \$12. Tours originate at the Souvenir Store located on Yawkey Way across from Service Gate D, rain or shine. This tour offers an inside look at America's oldest active Major League ballpark, including a visit to the top of the famed "Green Monster."

THE FREEDOM TRAIL FOUNDATION'S FREEDOM TRAIL PLAYERS

617-357-8300. Tours depart Boston Common Visitor Information Center and the Bostix booth at Faneuil Hall; call for times. \$14; seniors & students \$12; children (12 and under) \$8; call for private tours. Explore the Freedom Trail with costumed actors portraying famous patriots such as James Otis, Abigail Adams and William Dawes in this 90-minute tour.

HISTORIC PUB CRAWL

BosTix Booth, Faneuil Hall, 617-357-8300. Reservations required. Tue at 5:30 p.m. \$43. The Freedom Trail Foundation's 18th-century costumed guide takes you on a

tour of Boston's historic pubs where treasonous events were hatched more than 250 years ago. Enjoy plenty of beer and light fare along the way.

NORTH END MARKET TOUR

855-249-1163, bostonfoodtours.com. Three-hour tours: Wed & Sat at 10 a.m. and 2 p.m., Fri at 10 a.m. and 3 p.m. Reservations required. Custom tours for groups available. \$57. Michele Topor, an authority on Italian cuisine and culture, hosts walking tours through one of the nation's oldest Italian-American communities.

SUPER DUCK TOURS

Departing from Charlestown Navy Yard and Visitor's Center at 100 Terminal St., Charlestown. Call 617-742-1440 or visit bostonupertours.com to book a charter. Tours daily at noon, 2 and 4 p.m. \$33.33; seniors & students \$29.52; children (3–11) \$21.90; children (under 3) \$11.43. This 90-minute tour departs from Charlestown Navy Yard, and offers a free shuttle to and from the New England Aquarium area. Boston's newest amphibious tour takes visitors on a narrated waterfront journey through the streets of

PLYMOUTH SIGHTSEEING

Take the PASSAGE TO PLYMOUTH

Board our Motor Coach from South Station at 8:15 a.m. and connect with the America's Hometown Shuttle Trolley to visit the Mayflower II, Plymouth Rock, Plimoth Plantation and much more!



Tours Daily: June 25–August 28*

*No service on July 4th or August 27th.

508-746-0378 P-B.COM

Boston, which suddenly turns into a nautical adventure when the bus becomes a boat and plunges boldly into Boston Harbor.

Whale Watches

NEW ENGLAND AQUARIUM

Central Wharf, 617-227-4321. Mon-Fri at 9, 10 and 11 a.m., noon and 2 p.m., Sat & Sun at 9, 10 and 11 a.m., noon, 1, 2, 3 and 5 p.m. \$49; seniors \$44; children (3-11) \$33; children (2 and under) \$16. Cruise on high-speed catamarans to Stellwagen Bank, the East Coast's most famous destination for whale watching. Catch sight of humpback, finback and minke whales from the deck or from the comfort of a fully modernized cabin boasting snack and beverage services.

Wildlife

FRANKLIN PARK ZOO

One Franklin Park Road, Franklin Park, 617-541-LION. Mon-Fri 10 a.m.-5 p.m., Sat & Sun 'til 6 p.m. \$19.95; seniors \$16.95; children (2-12) \$13.95; military personnel with ID half-price. Home to more than 210 species, many of them endangered. Roam the Australian Outback Trail with kangaroos, visit the gorillas in the Tropical Forest, marvel at the lion at Kalahari Kingdom and see zebras, ostriches and wildebeests at Serengeti Crossing.

NEW ENGLAND AQUARIUM

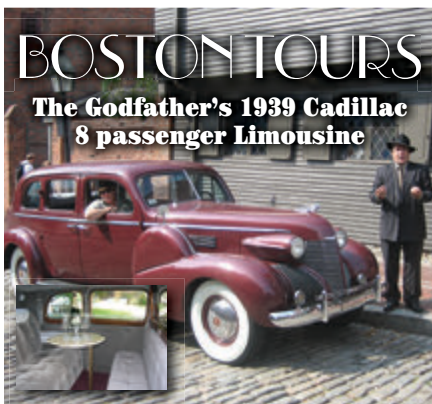
Dedicated to advancing knowledge of the world of water, this aquatic zoo features a Giant Ocean Tank containing a Caribbean coral reef; a popular penguin habitat; Northern fur seals



in the Marine Mammal Center; a shark and ray touch tank; and the Simons 3D IMAX Theater. Central Wharf, 617-973-5206. Mon-Fri 9 a.m.-5 p.m., Sat & Sun 'til 6 p.m.; beginning July 1-Sun-Thu 9 a.m.-6 p.m., Fri & Sat 'til 7 p.m. \$26.95; seniors & students \$24.95; children (3-11) \$18.95; children (under 3) free. Refer to Current Events section under Film for IMAX theater listings. Combination ticket prices available.

STONE ZOO

149 Pond St., Stoneham, 617-541-LION. Mon-Fri 10 a.m.-5 p.m., Sat & Sun 'til 6 p.m. \$16.95; seniors \$14.95; children (2-12) \$11.95; military personnel with ID half-price. Highlights include Mexican gray wolves, meerkats, snow leopards, jaguars, black bears and white-cheeked gibbons.



See Boston up close and personal, while our drivers narrate Boston's history, as we drive down Boston's narrow side streets. Tours range from 1½ to 2½ hours. Prices as low as \$30.

**FREE BOSTON AREA PICK UP
AND DROP OFF!**

www.Antique-Limousine.com

617-309-6414

20 minutes
from Boston.

20 years
as your local park.



**The Best View of Boston—
at Home or on the Go!**

bostonguide.com



the official site of
PANORAMA
THE OFFICIAL GUIDE TO BOSTON

PANO
PICK



THE ART DRIVE

The ninth year of this open studio event featuring 34 Dartmouth and Westport artists on Massachusetts' south coast emphasizes educating visitors in some very unusual and dramatic studio settings. Enjoy a scenic drive through this picturesque area with ample time for a picnic lunch at the beach or dinner at one of the many area restaurants.

For details, visit the-art-drive.com. Aug 6 & 7 from 10 a.m.-5 p.m. Free.

Museums

CONCORD MUSEUM

200 Lexington Road, Concord, 978-369-9763, concordmuseum.org. Mon-Sat 9 a.m.-5 p.m., Sun noon-5 p.m. \$10; seniors & students \$8; children (5-17) \$5; children (under 5) & active military free. Ample free parking on Cambridge Turnpike. Relive Concord's history, from Native American habitation and European settlement to the days of Emerson, Thoreau, the Alcotts and Hawthorne. **Special exhibit:** N. C. Wyeth's Men of Concord.

DECORDOVA SCULPTURE PARK AND MUSEUM

51 Sandy Pond Road, Lincoln, 781-259-8355, decordova.org. Daily 10 a.m.-5 p.m. \$14; seniors \$12; students \$10; children (12 and under) free. Sculpture Park: open sunrise to sunset, admission charged during museum operating hours only. Tour one of the largest contemporary art museums and the only permanent public sculpture park in New England. **Special exhibits:** Overgrowth; Lotte Jacobi, Lisette Model; Urban Camera.

PEABODY ESSEX MUSEUM

East India Square, Salem, 866-745-1876, pem.org. Tue-Sun 10 a.m.-5 p.m. \$20; seniors \$17; students \$12; children (16 and under) free. The nation's oldest continually operating museum boasts a collection showcasing African, Asian, Pacific Island and American folk and decorative art, a maritime collection and the first collection of Native American art in the hemisphere. **Special exhibits:** Importing Splendor: Luxuries from China; Raven's Many Gifts: Native Art of the Northwest Coast; MegaCity: India's Culture of the Streets; Stickwork: Patrick Dougherty; Sizing It Up: Scale in Nature and Art; Intersections: Anila Quayyum Agha; Rodin: Transforming Sculpture; American Impressionist: Childe Hassam and the Isles of Shoals.

SALEM WITCH MUSEUM

19½ Washington Square North, Salem, 978-744-1692, salemwitchmuseum.com. Daily 10 a.m.-5 p.m. \$11; seniors \$9.50; children (6-14) \$8. Life-size stage settings and historically accurate narration recreate the hysteria of the Salem Witch Trials and executions of 1692. Translations available in Japanese, French, German, Italian and Spanish.

Sights of Interest

ADAMS NATIONAL HISTORICAL PARK

1250 Hancock St., Quincy, 617-770-1175. Take the "T" to the Quincy Center stop on the Red Line. Daily 9 a.m.-5 p.m. \$10; children (under 16) free. This historical gem offers insight into the lives of U.S. presidents John Adams and son John Quincy Adams. See the birthplaces of both presidents, as well as "The Old House," which was home to five generations of the family.

MINUTE MAN NATIONAL HISTORICAL PARK

978-369-6993, Concord and Lexington (North Bridge Visitor Center, 174 Liberty St., Concord). Park grounds open sunrise to sunset. Created in 1959 to preserve the sites associated with the opening battles of the American Revolution, Minute Man Park consists of more than 900 acres of land along original segments of the Battles of Lexington and Concord, including Lexington Green and Concord's North Bridge, as well as The Wayside, the 19th-century home of literary greats Nathaniel Hawthorne and Louisa May Alcott.

PLIMOTH PLANTATION

When the Pilgrims landed in America in 1620, they landed at Plymouth Rock. They built their settlement three miles south of the rock and named it Plimoth Plantation. Today, visitors can tour the Plantation and see how the Pilgrims went about their daily lives, hunting, gathering and making crafts. 137 Warren Ave., Plymouth, 508-746-1622. Daily 9 a.m.-5 p.m. \$31; seniors \$28; children (5-12) \$19.95; (under 5) free.



Tours and Trails

PASSAGE TO PLYMOUTH/ AMERICA'S HOMETOWN SHUTTLE

508-746-0378, p-b.com. Motor coach from South Station (700 Atlantic Ave.) daily at 8:15 a.m.; departs Plymouth at 4:50 p.m. Fares: \$27; children (5-18) \$14; children (under 5) free (max. two per adult). Shuttle fares: \$15; children (6-18) \$7.50; children (under 5) free (max. two per adult). No service **Aug 27**. Hop off and on with an all-day pass for a narrated tour that highlights the arrival of the Pilgrims; Plymouth Rock; the scenic waterfront; Plimoth Plantation; information about museums, shops and restaurants; and much more.

Come Aboard!



Experience *Mayflower II*
and more when you
visit Plimoth Plantation.

PLIMOTH[®]

PLANTATION

Where History Comes Alive!

(508) 746-1622
www.plimoth.org

Outdoor Exhibits Open
9 a.m. - 5 p.m.
through November 30

FREEDOM TRAIL

The Freedom Trail begins at the Boston Common Information Kiosk, where you can obtain a map, rent a self-guided audio tour or take a walking tour (in season) with an 18th-century costumed guide. Ticket sales from Freedom Trail Foundation tours help preserve the historic sites. Boston National Historical Park tours (National Park Service) begin at Faneuil Hall. Call 617-357-8300 or visit TheFreedomTrail.org for additional info.

1 BOSTON COMMON

Set aside in 1634 as a military training field and grazing pasture, the Common is America's oldest public park. It served as quarters for British as well as Colonial troops, and later housed Civil War regiments. The British Army set out for the start of the Revolutionary War from what is now Park Square.



2 THE STATE HOUSE

Beacon Hill, 617-727-3676. Mon-Fri 8:45 a.m.-5 p.m., except holidays. Registration required for guided tours. The golden dome marks the government seat of the Commonwealth of Massachusetts. On land acquired from John Hancock, Samuel Adams laid the cornerstone, and the red brick portion was designed by architect Charles Bulfinch.

3 PARK STREET CHURCH

Corner of Park and Tremont streets, 617-523-3383. Tue-Sat 9:30 a.m.-3 p.m. Services: Sun at 8:30 and 11 a.m. and 4 p.m. Morning services are traditional, evening services are contemporary. Built in 1809, this church was described by Henry James as "the most interesting mass of brick and mortar in America."

4 OLD GRANARY BURYING GROUND

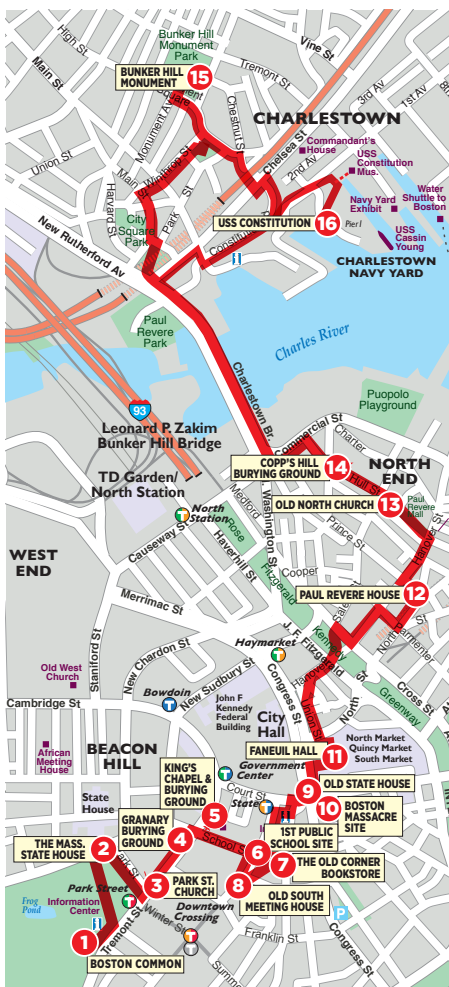
Tremont St. next to Park Street Church, 617-635-4505. Daily 10 a.m.-5 p.m. This historic cemetery is the final resting place of John Hancock, Paul Revere, Samuel Adams and the victims of the Boston Massacre, as well as Elizabeth Goose, believed to be the legendary "Mother Goose."

5 KING'S CHAPEL & BURYING GROUND

Tremont and School Sts., 617-227-2155. Chapel: Mon-Sat 10 a.m.-5 p.m., Sun 1:30-5 p.m. Services: Sun at 11 a.m., Wed at 6 p.m. Burying Ground: daily 10 a.m.-5 p.m. Still an active house of worship, King's Chapel was established in 1687 as the first Anglican congregation in Boston.

6 SITE OF FIRST PUBLIC SCHOOL & BEN FRANKLIN'S STATUE

On School Street, marked by a column and commemorative plaque. On April 13, 1635, the town voted to establish the first public school in the country. Nearby is Benjamin Franklin's statue, built in 1856, the first portrait statue erected in the United States.



7 SITE OF THE OLD CORNER BOOKSTORE

School and Washington streets. Constructed as an apothecary in 1718, the ground floor was later a bookstore and literary center of Boston and a meeting place for notables like Emerson, Hawthorne and Thoreau.



8 OLD SOUTH MEETING HOUSE

310 Washington St., 617-482-6439. Daily 9:30 a.m.-5 p.m. \$6; seniors & students \$5; children (5-17) \$1; children (under 5) free. This building houses many town meetings, the most famous of which saw an outraged Samuel Adams signal the start of the Boston Tea Party.

9 OLD STATE HOUSE

Corner of Washington and State streets, 617-720-1713. Daily 9 a.m.-6 p.m. \$10; seniors & students \$8.50; children (18 and under), military & veterans free. Built in 1713, this seat of Colonial government was the center of activity for such patriots as John Hancock and Samuel and John Adams. It was here that the Declaration of Independence was first read in Boston.

10 BOSTON MAS-SACRE SITE

State Street in front of the Old State House. At the next intersection below the State House, a ring of cobblestones marks the site of the clash between a jeering Boston crowd and a British guard of nine soldiers on March 5, 1770.



11 FANEUIL HALL

Merchants Row and Faneuil Hall Square, 617-242-5689. Daily 9 a.m.-5 p.m. Historical talks given every half hour from 9:30 a.m.-4:30 p.m., when hall is not in use. "The Cradle of Liberty" combines a marketplace on the first floor with the town meeting hall upstairs, the site of fiery revolutionary debate.

12 PAUL REVERE HOUSE

19 North Square, North Street, 617-523-2338. Daily 9:30 a.m.-5:15 p.m. \$3.50; seniors & students \$3; children (5-17) \$1. The oldest home in Boston (built c. 1680), occupied by silversmith and patriot Paul Revere from 1770 to 1800.

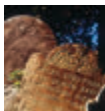
13 OLD NORTH CHURCH

193 Salem St., 617-523-6676. Daily 9 a.m.-6 p.m. Services: Sun at 9 and 11 a.m. Known as Christ Church and erected in 1723, this is Boston's oldest standing church. Two lanterns were hung here on April 18, 1775, signaling the Redcoats' departure by sea for Lexington and Concord.



14 COPP'S HILL BURYING GROUND

Hull Street. Daily 9 a.m.-5 p.m. Set out in 1659, Copp's Hill was Boston's second cemetery. Many remarkable people are interred here, including the Mather family of ministers and Edmund Hartt, builder of the USS Constitution.



15 BUNKER HILL MONUMENT

Breed's Hill, Charlestown, 617-242-7511. Daily 9 a.m.-5 p.m.; last climb at 4:30 p.m. The site of the historic battle of June 17, 1775.



16 USS CONSTITUTION

Charlestown Navy Yard, Charlestown, 617-242-5670. Tue-Fri 2:30-6 p.m., Sat & Sun 10 a.m.-6 p.m. This 44-gun frigate is the world's oldest commissioned warship, christened "Old Ironsides" during the War of 1812 when cannonballs literally bounced off her triple hull.

Red Hot.



Timeless Tuesdays
Bite Thursdays
Play Fridays
Flaunt Saturdays

BOND
restaurant | lounge

The Langham, Boston
250 Franklin St., Boston
617.956.8765 bondboston.com

PANO
PICK



TOP OF THE HUB

Sit 52 stories above Boston for great dining and a spectacular view of the city. Live jazz seven nights a week. L, D, SB, LS, C. \$\$\$\$
800 Boylston St., Prudential Center, 617-536-1775, topofthehub.net.

Back Bay

ASTA

47 Massachusetts Ave., 617-585-9575, astaboston.com. Earthy, mysterious and minimal, Asta offers a prix fixe tasting menu-only experience. An open kitchen invites you to get up close and personal with the menu of your choice: three, five or eight courses. D. \$\$\$\$

BAR 10

Westin Copley Place, 10 Huntington Ave., 617-424-7446, bar10boston.com. Bar 10 mixes signature martinis and lighter, modern American fare with a vibrant setting and an array of shareable dishes, including salads, flatbread pizzas and more. Voted Best Hotel Bar by *Boston* magazine and Best Civilized Nightcap by *The Improper Bostonian*. L, D, C, SB. \$\$

BEN & JERRY'S

174 Newbury St., 617-536-5456; *New England*

Aquarium, 1 Central Wharf, 617-536-5456; benjerry.com. The Vermont-based premium ice cream purveyors offer favorite flavors like Chunky Monkey, Phish Food and Cherry Garcia, as well as cookies, brownies, shakes and refreshing fruit smoothies. \$

DAVIO'S NORTHERN ITALIAN STEAKHOUSE

75 Arlington St., 617-357-4810, davios.com. Davio's spacious, relaxed dining room serves as the perfect stage for its signature dishes, including homemade pastas and Brandt meats as well as a selection of fresh seafood. Additional flair is provided by the open kitchen layout. L, D, VP, C. \$\$\$

KEY

B	Breakfast
L	Lunch
D	Dinner
BR	Brunch
SB	Sunday Brunch
C	Cocktails
LS	Late Supper (serving after 10 p.m.)
VP	Valet Parking
NC	Credit Cards Not Accepted
*	Entertainment

AVERAGE PRICE OF DINNER ENTREES

\$	Most less than \$12
\$\$	\$12-18
\$\$\$	\$19-25
\$\$\$\$	Most more than \$25

Many restaurants offer a wide range of entrees and prices; the classifications are only approximations.

Refer to Cuisine Index, page 60.

Scan this code for expanded *Panorama* dining listings



or visit bostonguide.com

JASPER WHITE'S SUMMER SHACK

50 Dalton St., 617-867-9955; 149 Alewife Brook Parkway, Cambridge, 617-520-9500; summershackrestaurant.com. Enjoy top-notch seafood such as pan-roasted lobster, award-winning fried chicken and an impressive raw bar in a casual setting. L, D. \$\$\$

INSIDE TIP: Summer Shack also has a location at Mohegan Sun casino in Connecticut.

L'ESPALIER

Mandarin Oriental Boston, 774 Boylston St., 617-262-3023, lespalier.com. This sophisticated French classic, consistently named as one of Boston's top eateries, is a favorite of both power brokers and couples out for a romantic evening. L, D. \$\$\$\$

OAK LONG BAR + KITCHEN

Fairmont Copley Plaza, 138 St James Ave., 617-585-7222, oaklongbarkitchen.com. This brasserie-style spot features a menu of inventive American dishes. The namesake Long Bar winds more than 80 feet through the restaurant, offering a central meeting

place for everyone from young professionals and tourists to execs. B, L, D, LS, C, SB. \$\$\$\$

*THE TAJ BOSTON

15 Arlington St., 617-536-5700, tajhotels.com. This 1927 landmark offers dishes reflecting the seasonal flavors of New England as well as authentic Indian dishes for dinner. Cafe: B, L, D, Sat & SB. Lounge: L, D, C, LS. Bar: L, D, C, LS. \$\$\$\$

TOWNE STOVE AND SPIRITS

900 Boylston St., 617-247-0400, towneboston.com. The melting pot of cuisines at this favored eatery within the Hynes Convention Center draws inspiration from numerous sources. Blending home-style, gastropub fare with refined presentations and contemporary influences, Towne creates a dining experience with something for everyone. L, D, Sat & SB, C. \$\$\$\$

Beacon Hill

ANTONIO'S

288 Cambridge St., 617-367-3310, antoniosofbeaconhill.com. One of Boston's finest Italian restaurants, Antonio's serves tra-

Welcome To America's Oldest Restaurant UNION OYSTER HOUSE

A National Historic Landmark



*On The Freedom Trail
One Block From
Historic Faneuil Hall*

*Specializing In Hearty Portions
Of Yankee Style Seafood,
Fresh New England Lobster
And Grilled Meats*

41 Union Street • 617-227-2750

*Sunday-Thursday 11 am -9:30 pm • Friday & Saturday 11 am -10 pm • Union Bar til -Midnight
Functions • Validated Parking • All Major Credit Cards Honored • Reservations Recommended
Visit Our Website • www.unionoysterhouse.com*

DINING

ditional Italian food with nightly specials and a lengthy wine list. Specialties include homemade fusilli and shrimp margarita. L, D. \$\$

*CHEERS

84 Beacon St., 617-227-9605; [Faneuil Hall Marketplace](http://FaneuilHallMarketplace.com), 617-227-0150; cheersboston.com. The original Beacon Hill pub and its spin-off offer tasty traditional fare and an abundant beverage selection. Live entertainment Thu-Sat. L, D, C, LS. \$

CLINK

The Liberty Hotel, 215 Charles St., 617-224-4004, libertyhotel.com/clink. Artfully marrying European culinary tradition with contemporary American innovation, Clink's dining room features elements of the original cells from its earlier life as the Charles Street Jail. Clink's lobby bar draws trendy urbanites with its energetic nightlife scene. B, L, C. \$\$\$

THE HUNGRY I

71½ Charles St., 617-227-3524, hungryiboston.com. In a two-story townhouse with three working fireplaces and an outdoor patio, chef Peter Ballarin

serves signature dishes, including venison au poivre. L Thu & Fri, D, SB, C. \$\$\$

Downtown

*BOND

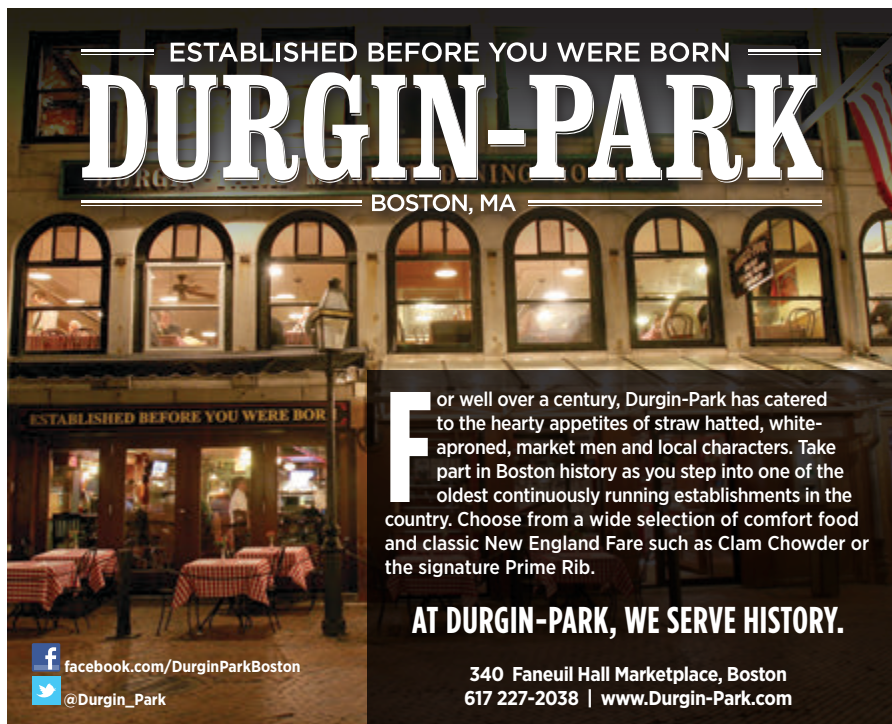
Langham Hotel Boston, 250 Franklin St., 617-956-8765, bondboston.com. This swanky restaurant and lounge boasts a diverse cocktail and wine menu to accompany its array of exotic international cuisine. L, D, C. \$\$\$

*CAFE FLEURI

Langham Hotel Boston, 250 Franklin St., 617-451-1900, boston.langhamhotels.com. Enjoy one of Boston's top Sunday brunches, or sample contemporary New England fare and desserts within a sunlit garden atrium. B, L, SB. \$\$

MERITAGE RESTAURANT + WINE BAR

Boston Harbor Hotel at Rowes Wharf, 617-439-3995, meritagetherestaurant.com. Known for its excellence in wine and food pairings, Meritage unveils a redesigned dining room, sophisticated wine bar and new private dining rooms overlooking Boston



ESTABLISHED BEFORE YOU WERE BORN
DURGIN-PARK
BOSTON, MA

For well over a century, Durgin-Park has catered to the hearty appetites of straw hatted, white-aproned, market men and local characters. Take part in Boston history as you step into one of the oldest continuously running establishments in the country. Choose from a wide selection of comfort food and classic New England Fare such as Clam Chowder or the signature Prime Rib.

AT DURGIN-PARK, WE SERVE HISTORY.

facebook.com/DurginParkBoston
@Durgin_Park

340 Faneuil Hall Marketplace, Boston
617 227-2038 | www.Durgin-Park.com

Harbor. Complementing the refreshed interior is Chef Daniel Bruce's unique vineyard-to-table menu. D, LS, SB, C, VP. \$\$\$\$

O YA

9 East St., 617-654-9900, oyarestaurantboston.com. This contemporary and edgy sushi eatery, crowned Boston's best restaurant of 2009 by *Boston* magazine, boasts a simple, natural decor that perfectly complements the exquisitely created dishes. The intimate seating capacity of 37 diners makes reservations a must. D, C, VP. \$\$\$

PARKER'S RESTAURANT

Omni Parker House, 60 School St., 617-227-8600. Enjoy nostalgic cuisine with a contemporary flair in the stately dining room where Boston cream pie and the Parker House roll were first served. B, L, D. \$\$\$\$

ROWES WHARF SEA GRILLE

Rowes Harbor Hotel at Rowes Wharf, 617-856-7744, roweswharfseagrille.com. Rowes Wharf Sea Grille delivers the sea straight to your table. Enjoy power breakfasts and lunches followed by a vibrant after-work cocktail and dinner scene. The sunlight-filled dining room or seasonal outdoor terrace is an ideal spot for a leisurely lunch or special date night. B, L, D. \$\$\$

TRADE

540 Atlantic Ave., 617-451-1234, trade-boston.com. James-Beard-Award-winning chef Jody Adams serves delectable fusion dishes inspired by her world travels in an elegant, modern interior. L, D, SB. \$\$\$

YE OLDE UNION OYSTER HOUSE

41 Union St., 617-227-2750, unionoystershose.com. America's oldest restaurant, now celebrating 190 years, serves Yankee-style seafood, beef and chicken, and is famed for the oyster bar where Daniel Webster dined daily. Specialties include clam chowder and fresh lobster. L, D, VP. \$\$\$

YVONNE'S

2 Winter Place, 617-267-0047, yvonnesboston.com. Located in the space formerly occupied by the legendary Locke-Ober, this "modern supper club" serves internationally inspired small plates, rare wines, select beers and both classic and innovative cocktails in a luxurious setting. D, LS, C. \$\$\$



Home of the PAN ROASTED LOBSTER



Announcing...Our New Function Room in Cambridge

Contact:

ahudson@shackfoods.com

BOSTON

50 Dalton Street • 617.867.9955

CAMBRIDGE

149 Alewife Brook Parkway • 617.520.9500

MOHEGAN SUN CASINO

860.862.9500

Food is Love™

www.summershackrestaurant.com



THIRSTY?

**NOW OFFERING
20+ WINES BY THE GLASS AND
12 CRAFT BEERS ON TAP**

32 REASONS TO SAY, "CHEERS"

Located in the Westin Copley Place
10 Huntington Ave Boston MA
Open 7 days, Full menu until 12 am

bar**10**

BAR10BOSTON.COM

 @Bar10_Boston

THE WESTIN
COPLEY PLACE
BOSTON

Faneuil Hall Marketplace

*DURGIN-PARK

340 Faneuil Hall Marketplace, 617-227-2038, durgin-park.com. For more than a century, Durgin-Park has catered to the hearty appetites of locals and visitors alike. One of the oldest continuously running restaurants in the country, it features a wide selection of comfort food and classic New England fare, including clam chowder and the signature prime rib. L, D, C. \$\$

*HARD ROCK CAFE

22-24 Clinton St., 617-424-7625, hardrock.com. Offering classic American cuisine served with a healthy dose of rock 'n' roll. After you eat, take in the massive collection of authentic music memorabilia or enjoy live music from hot local and national acts. L, D, C, LS. \$

Fenway/Kenmore Square

THE BLEACHER BAR

82A Lansdowne St., 617-262-2424, bleacherbarboston.com. Inside Fenway Park, underneath the bleachers, take in center field views of America's most beloved ballpark. With the feel of a neighborhood pub and featuring a deli-style menu and cold beer, The Bleacher Bar is open all year round. L, D, C. \$

EASTERN STANDARD

Hotel Commonwealth, 528 Commonwealth Ave., 617-532-9100, easternstandardboston.com. This Kenmore Square brasserie resembles an old hotel dining room and attracts a diverse crowd, from businessmen to Red Sox fans seeking a pre-game bite. B, L, D. \$\$

GAME ON!

82 Lansdowne St., 617-351-7001, gameonboston.com. This sports bar/restaurant/nightclub built inside Fenway Park offers a sleek spot in which to sample a full menu and watch sporting events on a number of big-screen TVs. L, D. \$\$

North End

ARAGOSTA BAR & BISTRO

3 Battery Wharf, 617-994-9001, aragostabistro.com. Aragosta offers a warm, social atmosphere and contemporary Italian cuisine in a stunning waterfront setting that features an open kitchen with a

chef's counter and an outdoor terrace with views of Boston Harbor. B, L, D, BR, C. \$\$\$

MASSIMINO'S CUCINA ITALIANA

207 Endicott St., 617-523-5959, massiminosboston.com. Owner/chef Massimo—former head chef of Naples' Hotel Astoria and Switzerland's Metropolitan Hotel—offers specialties like veal chop stuffed with arugula, prosciutto, smoked mozzarella and black olives, among numerous other delights. L, D, LS, C. \$

REGINA PIZZERIA

Patrons have been indulging in delicious, award-winning homemade pizza at Boston's oldest brick-oven pizzeria since 1926. Delivery and curbside-to-go service available. 11½ Thacher St., 617-227-0765, reginapizzeria.com; also: Quincy Market, Faneuil Hall Marketplace; South Station, Atlantic Ave. and Summer Street; 353 Cambridge St., Allston, 617-783-2300; 1330 Boylston St., 617-266-9210. C in Allston. L & D daily. \$



TERRAMIA RISTORANTE

98 Salem St., 617-523-3112, terramia-ristorante.com. Specializing in creative interpretations of Italian classics, Terramia offers seasonally based dishes and an extensive wine list in a cozy, rustic atmosphere. D. \$\$

South Boston Waterfront/ Seaport District

BABBO PIZZERIA

11 Fan Pier Blvd., 617-421-4466, babbopizza.com. Celebrity chef Mario Batali's huge waterfront enoteca serves wood-fired pizzas, small plates, gelato, Italian wines and more. L, D, LS, C. \$\$

BLUE DRAGON

324 A St., 617-338-8585, ming.com/blue-dragon. Named one of the best new restaurants of 2013 by *Esquire*, Ming Tsai's 80-seat gastropub is a relaxed, Asian-fusion neighborhood hangout with a tapas-style menu. L, D, LS, C. \$\$

MENTON

354 Congress St., 617-737-0099, mentonboston.com. This famed restaurant

Regina
PIZZA
Since 1926

*Award Winning
Since 1926*

Thacher Street
North End

Faneuil Hall Marketplace

South Station

"The Fenway"
1330 Boylston Street

Children's Hospital

Medford

Allston

Visit us at
Reginapizza.com
For a Location Near You

DINING

by James-Beard-Award-winning chef Barbara Lynch combines meticulous French technique with a passionate Italian sensibility in a luxurious atmosphere. D. \$\$\$\$

PASTORAL

345 Congress St., 617-345-0005, pastoralfortpoint.com. Enjoy authentic, wood-fired Neapolitan pizza, house-made pastas, seasonal Italian entrees, wine on tap and beer cocktails in a warm, rustic setting. L, D, LS, C. \$\$

SPORTELO

348 Congress St., 617-737-1234, sportelloboston.com. Celebrity chef Barbara Lynch provides her interpretation of a classic diner, serving up impeccable trattoria-inspired Italian dishes and a wine bar. L, D, SB. \$\$\$

TAVERN ROAD

343 Congress St., 617-790-0808, tavernroad.com. Brothers Louis and Michael DiBiccari combine forces with local Boston artists to bring Fort Point a street-food inspired menu featuring sharable small plates. L, D, LS, C. \$\$

South End

B&G OYSTERS

550 Tremont St., 617-423-0550, bandgoysters.com. This South End raw bar from James Beard Award-winning chef Barbara Lynch and Garrett Harker features bivalves from Wellfleet to the West Coast, as well as signature dishes like the lobster BLT and the Maine lobster roll. L, D. \$\$

*THE BEEHIVE

541 Tremont St., 617-423-0069, beehiveboston.com. Hailed as a must-see Boston venue by *Travel + Leisure*, *Zagat* and *The New York Times*, this popular Bohemian eatery and bar features world-class live music as well as generous food and drink. D, Sat & SB. \$\$

GASLIGHT

560 Harrison Ave., 617-422-0224, gaslight560.com. Critics and locals alike are drawn to this acclaimed French brasserie featuring top-notch fare and a young, energetic atmosphere. SB, L, D. \$\$\$

TORO

1704 Washington St., 617-536-4300, toro-restaurant.com. Chef Ken Oringer's

The Food. The place. cityplace

RESTAURANT
ROCK-BOTTOM
BREWERY

CHIPOTLE
MEXICAN GRILL

P.F. CHANG'S
CHINA BISTRO

JIMMY JOHN'S
GOURMET SANDWICHES

Panera
BREAD

cityplaceboston.com

12 Restaurants & More! Located in the Theater District at 8 Park Plaza.

popular Spanish restaurant features seating at a series of communal tables and small, perfect-for-sharing tapas dishes—such as salt cod fritters, crispy pork belly and glazed beef short ribs—that blend a variety of vibrant styles and flavors. L, D, SB, C. \$\$\$

TREMONT 647

647 Tremont St., 617-266-4600, tremont647.com. Chef Andy Husbands' inspired American fusion draws constant crowds to this South End staple. Make sure to catch the excellent brunch featuring homemade Pop Tarts. D, Sat & SB. \$\$

Theatre District

ABBY LANE FOOD & SPIRITS

255 Tremont St., 617-451-2229, abbylaneboston.com. A neighborhood restaurant with a focus on approachability, affordability and excellent service, Abby Lane provides guests with a delightful experience by offering delicious handcrafted food and spirits in a fun and family-friendly environment. L, D, C, LS. \$\$

AVENUE ONE RESTAURANT

Hyatt Regency, One Avenue de Lafayette, 617-422-5579, regencyboston.hyatt.com. Newly renovated, this restaurant and lounge serves contemporary New England cuisine in a relaxed atmosphere. Enjoy a refreshing cocktail, three-course prix fixe dinner or a delectable dessert. Discounted parking available. B, L, D, C, VP. \$\$\$

BLU

4 Avery St., 617-375-8550, blurestaurant.com. Located in the heart of the Theatre District next door to the Ritz Carlton on the fourth floor, blu Restaurant and Bar is celebrating its 15th anniversary with a feast for the senses. Its contemporary American menu includes the all-time favorite lobster club. Featuring spectacular floor-to-ceiling windows, blu is perfect for a pre-show dinner, private dining and more. L, D, C. \$\$\$\$

CITYPLACE

On Stuart Street between Tremont and S. Charles streets in the State Transportation Bldg., cityplaceboston.com. Enjoy everything from handcrafted beers at Rock Bottom Brewery, delicious treats from Panera Bread and gourmet Chinese at P.F. Chang's as well



BEN & JERRY'S
BUY ONE CUP OR CONE
& get one the same size
FREE!

Back Bay:
174 Newbury St.
&
New England Aquarium:
1 Central Wharf

Good 2 per group
© Ben & Jerry's Confectionery, Inc. 2010 09/10/10



Contemporary American Dining
in the Heart of the Theatre District

LUNCH
Mon-Fri
11:30 am–2:30 pm

DINNER
Mon–Sat
5–10 pm

4 Avery Street, 4th Floor, Boston, MA
Between Tremont & Washington
617.375.8550

www.blurestaurant.com

CLINK.

SOCIAL URBAN FOOD & DRINK

AT THE LIBERTY HOTEL

215 CHARLES ST / BOSTON, MA 02114
TEL 617.224.4004

ANTONIO'S CUCINA ITALIANA

288 Cambridge Street Boston
(617) 367-3310

Across from Mass. General Hospital
on historic Beacon Hill

MASSIMINO'S

CUCINA • ITALIANA

207 ENDICOTT STREET • BOSTON

617.523.5959

www.massimosboston.com

as specialty pizzas, custom burritos and more in the Food Court. B, L, D, C. \$-\$\$\$

*JACOB WIRTH

31-37 Stuart St., 617-338-8586, jacobwirth.com. Opened in 1868, Jacob Wirth is the city's second-oldest restaurant, serving traditional German fare like wiener schnitzel, sauerbraten and a great selection of German beers. L, D, C, L.S. \$\$

LEGAL SEA FOODS

558 Washington St., 617-692-8888; 26 Park Plaza, Park Square Motor Mart, 617-426-4444; 255 State St., Long Wharf, 617-742-5300; Prudential Center, 800 Boylston St., 617-266-6800; 270 Northern Ave., Liberty Wharf, 617-477-2900; other locations, legalseafoods.com. This Boston tradition features more than 40 varieties of fresh fish and shellfish as well as a lengthy wine list. Named "Boston's Most Popular Restaurant" by *Zagat*. L & D. \$\$\$

CUISINE INDEX

AMERICAN	FRENCH COUNTRY	Regina Pizzeria 57
Abby Lane Food & Spirits 59	The Hungry i 54	Sportello 58
Asta 52	GREEN/GREEK-AMERICAN	Terramia Ristorante 57
Bar 10 52	Zoe's 29	JAPANESE/SUSHI
The Beehive 58	Ben & Jerry's 52	O Ya 55
The Bleacher Bar 56	INTERNATIONAL	NEW ENGLAND
Blu 59	Bond 54	Avenue One 59
Cheers 54	CityPlace 59	Cafe Fleuri 54
Clink 54	Jacob Wirth 60	Durgin-Park 56
Game On! 56	Menton 57	Henrietta's Table 29
Hard Rock Cafe 56	The Taj Boston 53	Nubar 29
Meritage Restaurant + Wine Bar 54	Towne Stove and Spirits 53	Zephyr on the Charles 29
Oak Long Bar + Kitchen 53	Trade 55	Yvonne's 55
Parker's Restaurant 55	IRISH	SEAFOOD
Russell House Tavern 29	The Asgard Irish Pub & Restaurant 28	B&G Oysters 58
Tavern Road 58	ITALIAN	Jasper White's Summer Shack 53
Top of the Hub 52	Antonio's 53	Legal Sea Foods 60
Tremont 647 59	Aragosta Bar & Bistro 56	Rows Wharf Sea Grille 55
ASIAN	Babbo Pizzeria 57	Ye Olde Union Oyster House 55
Blue Dragon 57	Dante 29	SPANISH/TAPAS
FRENCH/FRENCH-AMERICAN	Davio's Northern Italian Steakhouse 52	Toro 58
Eastern Standard 56	Massimino's Cucina Italiana 57	STEAKHOUSES
Gaslight 58	Pastoral 58	Davio's Northern Italian Steakhouse 52
L'Espalier 53		

DAVIO'S[®]

NORTHERN ITALIAN STEAKHOUSE

*Seasonal cocktails, handmade pasta,
perfectly cooked steaks & fresh seafood
expertly prepared using the finest ingredients.*

At Davio's, it's all about the guest.



**Boston | Foxborough | Chestnut Hill | Lynnfield
Philadelphia | Atlanta | New York City**

@SteveDiFillippo | www.davios.com

SHINING A LIGHT

Keeper of Boston Light
SALLY SNOWMAN illuminates
the history of America's most
historic lighthouse



THERE IS ONLY ONE LIGHTHOUSE

left in America that is still staffed: U.S. Coast Guard light station Boston Light on Little Brewster Island, a one-and-a-half-acre speck of land on the outskirts of Boston Harbor with an impressive 300-year history. Built in 1716 to help merchant vessels and new colonists navigate the harbor, the original tower was blown up by British soldiers during the Revolution. Today's structure from 1783 has survived more than two centuries of salt air and New England weather—which is impressive if you're familiar with New England winters.

Sally Snowman, a civilian employee of the Coast Guard, has been keeper of Boston Light since 2003. She began by volunteering on Little Brewster Island in 1994, helping to develop the historical interpreter program that now introduces visitors to the island's past. As keeper, Snowman lives on the station and monitors it between mid-April and mid-October. From Friday through Sunday in season, she welcomes visitors to the island with an introductory speech in the boathouse. "I'm never bored!" she exclaims. "Our motto is *Always an adventure.*"

Those who take the ferry out to Little Brewster Island are invited to slow down and experience what Snowman calls "island time." "If visitors just want to sit on the grass and watch the world go by, they can," she says, but a trip

to the island would not be complete without climbing the tower and standing next to Boston Light's Fresnel lens, an optic composed of 336 individual prisms that rotates and flashes once every ten seconds, just as it has been since its installation in 1859. "How many things in this country are that old, and are still functioning as they were originally intended?" asks Snowman. "That, to me, is worth a visit right there."

Also worth a visit is a special event on nearby Georges Island on Sunday, August 21, commemorating Boston Light's tricentennial together with the National Park Service centennial and the 20th anniversary of Boston Harbor Now. From 11 a.m.–3 p.m., the public is invited to build model lighthouses, paddle rowboats and watch a vintage baseball game. Those in Boston on Wednesday, September 14, can hear the Coast Guard Band play on

BOSTON LIGHT TOURS

Depart from the Boston Harbor Islands Welcome Center, 191 Atlantic Ave., at 9:30 a.m. and 1 p.m. on Fridays, Saturdays and Sundays. \$41; seniors, students & military \$37; children (8–12) \$32. For more information and to purchase tickets, visit bostonharborislands.org.

Long Wharf as proclamations are read to commemorate the tricentennial, with celebrations continuing that evening in the town of Hull, Mass., at the Hull Lifesaving Museum.

—*Olivia J. Kiers*

DUMP THE TEA INTO THE SEA



Step inside for an incredible journey back in time!

Be a part of the famous event that forever changed the course of American history! Live actors, high-tech interactive exhibits, authentically restored tea ships and a stirring, award-winning multi-sensory film are just a taste of what you'll see, hear and feel.

Souvenirs!

Bring home a bit of history from our gift shop. Browse through an array of gifts and keepsakes to remember your journey back to Boston 1773.



LOCATED ON CONGRESS ST. BRIDGE
617-702-2203
BOSTONTEAPARTYSHIP.COM

BOSTON TEA PARTY
SHIPS & MUSEUM ★★★★★ DECEMBER 16, 1773
A REVOLUTIONARY EXPERIENCE.

Present this coupon & receive

\$5.00 OFF

Adult Admission

*Good for up to 4 adult tickets. May not be used with any other coupon or discount. Not valid for online purchase. May only be redeemed at Boston Tea Party Ships & Museum. Expires 12/31/2016. g9M0116

Present this coupon & save

1 FREE GIFT

at Our Gift Shop

*May not be used with any other coupon or discount. Not valid for online purchase. May only be redeemed at Boston Tea Party Ships & Museum at time of purchase. Expires 12/31/2016. g9M0116

WELCOME TO DOWNTOWN CROSSING



SHOP. EAT. PLAY. DISCOVER.



DOWNTOWN
BOSTON

BUSINESS IMPROVEMENT DISTRICT

For more information visit
www.downtownboston.org

